
Product Datasheet

Rabbit IgG (H&L) antibody (RPE) (orb347658)

Description

Rabbit IgG (H&L) antibody (RPE)

Species/Host

Goat

Reactivity

Rabbit

Conjugation

RPE

Tested Applications

FC, IF, WB

Immunogen

Anti-Rabbit IgG was produced by repeated immunization with rabbit IgG whole molecule in goat.

Preservatives

0.01% (w/v) Sodium Azide

Form/Appearance

Lyophilized

Concentration

0.5 mg/mL

Storage

Store vial at 4° C prior to restoration. Restore with deionized water (or equivalent). This product is stable at 4° C as an undiluted liquid. Dilute only prior to immediate use. Centrifuge product if not completely clear after standing at room temperature. Do not freeze after reconstitution. Store reagent in the dark. Use subdued lighting during handling and incubation of cells prior to analysis.

Note

For research use only

Application notes

Anti-Rabbit IgG (H&L) Phycoerythrin Antibody has been tested by western blot and is suitable for immunomicroscopy and flow cytometry or FACS analysis as well as other antibody based fluorescent assays requiring extremely low background levels, absence of F(c) mediated binding, lot-to-lot consistency, high titer and specificity. The maximum amount of reagent required to stain 1 x 10E6 cells in flow cytometry is approximately 1.0 µg of antibody conjugate. Lesser amounts of reagent may be sufficient for staining. Optimal titers for other applications should be determined by the researcher. As a general guideline dilutions of 1:100 to 1:250 should be suitable for most applications.

Isotype

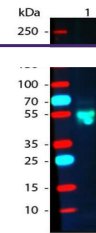
IgG

Clonality

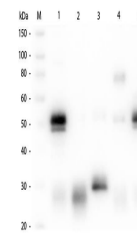
Polyclonal

Purity

Rabbit IgG (H&L) Antibody Phycoerythrin conjugated Pre-Adsorbed was prepared from monospecific antiserum by immunoaffinity chromatography using Rabbit IgG coupled to agarose beads followed by solid phase adsorption(s) to remove any unwanted reactivities, conjugation to phycoerythrin and



Western Blot of Goat anti-Rabbit IgG Pre...



Western Blot of Unconjugated Anti-Rabbit...