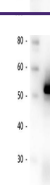
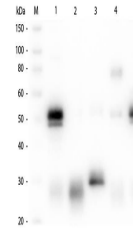

Product Datasheet

Rabbit IgG (H&L) antibody (Biotin) (orb347656)

Description	Rabbit IgG (H&L) antibody (Biotin)
Species/Host	Goat
Reactivity	Rabbit
Conjugation	Biotin
Tested Applications	ELISA, IHC, WB
Immunogen	Rabbit IgG whole molecule
Preservatives	0.01% (w/v) Sodium Azide
Form/Appearance	Lyophilized
Concentration	1.0 mg/mL
Storage	Store secondary antibody at 4° C prior to restoration. For extended storage aliquot antibody and freeze at -20° C or below. Avoid cycles of freezing and thawing. Centrifuge product if not completely clear after standing at room temperature. This product is stable for several weeks at 4° C as an undiluted liquid. Dilute only prior to immediate use.
Note	For research use only
Application notes	Anti-Rabbit IgG (H&L) Biotin Antibody has been tested by ELISA and western blot and is ideal for Western Blotting, Immunohistochemistry, ELISA as well as other antibody detection methods.
Isotype	IgG
Clonality	Polyclonal
Purity	Secondary antibody was prepared from monospecific antiserum by immunoaffinity chromatography using Rabbit IgG coupled to agarose beads followed by solid phase adsorption(s) to remove any unwanted reactivities. Assay by immunoelectrophoresis resulted in a single precipitin arc against anti-biotin, anti-Goat Serum, Rabbit IgG and Rabbit Serum. No reaction was observed against Bovine, Chicken, Goat, Guinea Pig, Hamster, Horse, Human, Mouse, Rat and Sheep Serum Proteins.
Dilution Range	ELISA: 1:20,000 - 1:400,000, IHC: 1:1,000 - 1:5,000, WB: 1:2,000 - 1:10,000
Expiration Date	12 months from date of receipt.

Western blot of Biotin conjugated Goat A...



Western Blot of Unconjugated Anti-Rabbit...