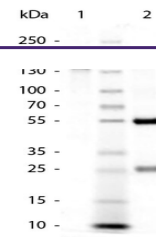
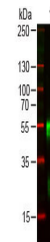

Product Datasheet

RABBIT IgG (H&L) antibody (orb347649)

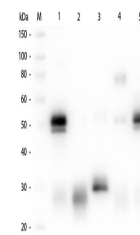
Description	RABBIT IgG (H&L) antibody
Species/Host	Goat
Reactivity	Rabbit
Conjugation	Unconjugated
Tested Applications	ELISA, IHC, WB
Immunogen	Anti-Rabbit IgG (H&L) was produced by repeated immunization with rabbit whole IgG molecule in goat.
Preservatives	0.01% (w/v) Sodium Azide
Form/Appearance	Liquid (sterile filtered)
Concentration	1.167 mg/mL
Storage	Store vial at 4° C prior to opening. This product is stable for several weeks at 4° C as an undiluted liquid. Dilute only prior to immediate use. For extended storage aliquot contents and freeze at -20° C or below. Avoid cycles of freezing and thawing.
Note	For research use only
Application notes	Anti-Rabbit IgG (H&L) has been tested by ELISA and western blot and is suitable for use in immunoelectrophoresis, western-blot, competitive western-blot, ELISA and competitive ELISA assays. Specific conditions for reactivity and signal detection should be optimized by the end user.
Isotype	IgG
Clonality	Polyclonal
Purity	This product was prepared from monospecific antiserum by immunoaffinity chromatography using Rabbit IgG coupled to agarose beads followed by solid phase adsorption(s) to remove any unwanted reactivities. Assay by immunoelectrophoresis resulted in a single precipitin arc against anti-Goat Serum, Rabbit IgG and Rabbit Serum. No reaction was observed against Bovine, Chicken, Goat, Guinea Pig, Hamster, Horse, Human, Mouse, Rat and Sheep Serum Proteins. Specificity was confirmed using ELISA against at less than 1% of target signal.
Dilution Range	ELISA: 1:15,000 - 1:30,000, IHC: 1:500 - 1:2,000, WB: 1:500 - 1:2,000
Expiration Date	12 months from date of receipt.



SDS of Goat Anti-Rabbit IgG Antibody Min...



Western Blot of Goat anti-RABBIT IgG (H&L)



Western Blot of Unconjugated Anti-Rabbit...