

Product Datasheet

Mouse IgG (H&L) Antibody Alkaline Phosphatase Conjugated Pre-Adsorbed (orb347568)

Description	Mouse IgG (H&L) antibody (Alkaline Phosphatase)
Species/Host	Rabbit
Reactivity	Mouse
Conjugation	AP
Tested Applications	ELISA, IHC, WB
Immunogen	Mouse IgG whole molecule
Preservatives	0.01% (w/v) Sodium Azide
Form/Appearance	Liquid (sterile filtered)
Concentration	1.0 mg/mL
Storage	Store vial at 4° C before opening. DO NOT FREEZE. This product is stable at 4° C as an undiluted liquid. Dilute only prior to immediate use. Freezing alkaline phosphatase conjugates will result in a substantial loss of enzymatic activity.
Note	For research use only
Application notes	Anti-Mouse IgG Alkaline Phosphatase conjugate has been tested by ELISA and western blot and is suitable for immunoblotting (western or dot blot), ELISA, immunoelectron microscopy and immunohistochemistry as well as other antibody-based enzymatic assays requiring lot-to-lot consistency.
Isotype	IgG
Clonality	Polyclonal

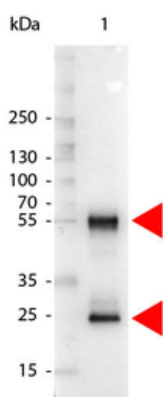
Biorbyt Ltd.

7 Signet Court, Swann's Road,
Cambridge, CB5 8LA, United Kingdom
Email: info@biorbyt.com, support@biorbyt.com
Phone: [+44 \(0\) 1223 859-353](tel:+44(0)1223859353) | Fax: [+1 \(415\) 651-8558](tel:+1(415)6518558)

Biorbyt LLC.

68 TW Alexander Drive,
Durham, NC, 27713, United States
Email: info@biorbyt.com, support@biorbyt.com
Phone: [+1 \(415\) 906-5211](tel:+1(415)9065211) | Fax: [+1 \(415\) 651-8558](tel:+1(415)6518558)

Purity	This product was prepared from monospecific antiserum by immunoaffinity chromatography using Mouse IgG coupled to agarose followed by solid phase adsorption to remove unwanted reactivities and extensive dialysis against the buffer stated above. Assay by immunoelectrophoresis resulted in a single precipitin arc against anti-Alkaline Phosphatase (calf intestine), anti-Rabbit Serum, Mouse IgG and Mouse Serum. No reactivity was observed against Human serum proteins.
Dilution Range	ELISA: 1:9,800, IHC: 1:100 - 1:500, WB: 1:500 - 1:2,000
Expiration Date	12 months from date of receipt.



Western Blot of Alkaline Phosphatase Conjugated Rabbit anti-Mouse IgG antibody. Lane 1: Mouse IgG. Lane 2: none. Load: 100 ng per lane. Primary antibody: none. Secondary antibody: Alkaline Phosphatase mouse secondary antibody at 1:1000 for 60 min at RT. Block: orb348637 for 30 min RT. Predicted/Observed size: 55 kDa, 28 kDa for Mouse IgG. Other band(s): none.

Biorbyt Ltd.

7 Signet Court, Swann's Road,
Cambridge, CB5 8LA, United Kingdom
Email: info@biorbyt.com, support@biorbyt.com
Phone: [+44 \(0\) 1223 859-353](tel:+44(0)1223859353) | Fax: [+1 \(415\) 651-8558](tel:+1(415)6518558)

Biorbyt LLC.

68 TW Alexander Drive,
Durham, NC, 27713, United States
Email: info@biorbyt.com, support@biorbyt.com
Phone: [+1 \(415\) 906-5211](tel:+1(415)9065211) | Fax: [+1 \(415\) 651-8558](tel:+1(415)6518558)