

## Product Datasheet

### Mouse IgM antibody (Alkaline Phosphatase) (orb347562)

**Description**

Mouse IgM antibody (Alkaline Phosphatase)

**Species/Host**

Rabbit

**Reactivity**

Mouse

**Conjugation**

AP

**Tested**

ELISA, IHC, WB

**Applications**
**Immunogen**

Mouse IgM whole molecule

**Preservatives**

0.1% (w/v) Sodium Azide

**Form/Appearance**

Liquid (sterile filtered)

**Concentration**

1.0 mg/mL

**Storage**

Store vial at 4° C before opening. DO NOT FREEZE. This product is stable at 4° C as an undiluted liquid. Dilute only prior to immediate use. Freezing alkaline phosphatase conjugates will result in a substantial loss of enzymatic activity.

**Note**

For research use only

**Application notes**

Anti-MOUSE IgM (alpha chain) Alkaline Phosphatase Antibody has been tested by ELISA and is suitable for immunoblotting (western or dot blot), ELISA, immunoperoxidase electron microscopy and immunohistochemistry as well as other peroxidase-antibody based enzymatic assays requiring lot-to-lot consistency. Specific conditions for reactivity should be optimized by the end user.

**Isotype**

IgG

**Clonality**

Polyclonal

**Purity**

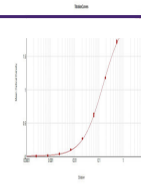
This product was prepared from monospecific antiserum by immunoaffinity chromatography using Mouse IgG coupled to agarose beads followed by solid phase adsorption(s) to remove any unwanted reactivities. Assay by immunoelectrophoresis resulted in a single precipitin arc against anti-Alkaline Phosphatase (calf intestine), anti-Rabbit Serum, Mouse IgM, and Mouse Serum. No reaction was observed against other mouse heavy or light chain proteins.

**Dilution Range**

ELISA: 1:20,000, IHC: User Optimized, WB: User Optimized

**Expiration Date**

12 months from date of receipt.



ELISA  
Results of  
Rabbit Anti-  
Mouse IgM  
A...