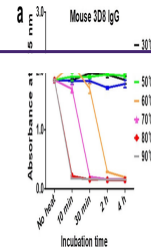


---

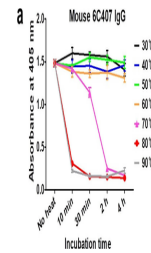
## Product Datasheet

### Mouse IgG F(c) antibody (Alkaline Phosphatase) (orb347559)

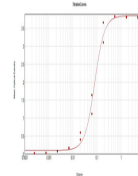
<b>Description</b>	Mouse IgG F(c) antibody (Alkaline Phosphatase)
<b>Species/Host</b>	Rabbit
<b>Reactivity</b>	Mouse
<b>Conjugation</b>	AP
<b>Tested Applications</b>	DOT, ELISA, IHC, WB
<b>Immunogen</b>	Mouse IgG F(c) fragment
<b>Preservatives</b>	0.01% (w/v) Sodium Azide
<b>Form/Appearance</b>	Liquid (sterile filtered)
<b>Concentration</b>	1.0 mg/mL
<b>Storage</b>	Store vial at 4° C before opening. DO NOT FREEZE. This product is stable at 4° C as an undiluted liquid. Dilute only prior to immediate use. Freezing alkaline phosphatase conjugates will result in a substantial loss of enzymatic activity.
<b>Note</b>	For research use only
<b>Application notes</b>	Anti-Mouse IgG F(c) Alkaline Phosphatase conjugate has been tested by dot blot and ELISA and is suitable for immunoblotting (western or dot blot), ELISA, immunoelectron microscopy and immunohistochemistry as well as other antibody-based enzymatic assays requiring lot-to-lot consistency.
<b>Isotype</b>	IgG
<b>Clonality</b>	Polyclonal
<b>Purity</b>	This product was prepared from monospecific antiserum by immunoaffinity chromatography using Mouse IgG coupled to agarose beads followed by solid phase adsorption(s) to remove any unwanted reactivities. Assay by immunoelectrophoresis resulted in a single precipitin arc against anti-Alkaline Phosphatase (calf intestine), anti-Rabbit Serum, Mouse IgG, Mouse IgG F(c) and Mouse Serum. No reaction was observed against Mouse IgG F(ab).
<b>Dilution Range</b>	ELISA: 1:5,000 - 1:15,000, IHC: 1:200 - 1:1,000, WB: 1:500 - 1:2,500
<b>Expiration Date</b>	12 months from date of receipt.



ELISA and SDS-PAGE analysis under therma...



ELISA and SDS-PAGE analysis under therma...



ELISA Results of Rabbit Anti-Mouse IgG F(c)...