

---

## Product Datasheet

**Mouse IgM (mu chain) antibody (Peroxidase)  
(orb347548)**

**Description**

Mouse IgM (mu chain) antibody (Peroxidase)

**Species/Host**

Rabbit

**Reactivity**

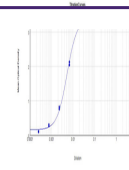
Mouse

**Conjugation**

HRP

**Tested**

ELISA, IHC, WB

**Applications**

 ELISA  
Results of  
Rabbit Anti-  
Mouse IgM  
A...

**Immunogen**

Mouse IgM whole molecule

**Preservatives**

0.01% (w/v) Gentamicin Sulfate. Do NOT add Sodium Azide!

**Form/Appearance**

Lyophilized

**Concentration**

1.5 mg/mL

**Storage**

Store vial at 4° C prior to restoration. For extended storage aliquot contents and freeze at -20° C or below. Avoid cycles of freezing and thawing. Centrifuge product if not completely clear after standing at room temperature. This product is stable for several weeks at 4° C as an undiluted liquid. Dilute only prior to immediate use.

**Note**

For research use only

**Application notes**

Mouse IgM (mu chain) peroxidase conjugated antibody has been tested by ELISA and is suitable for immunoblotting (western or dot blot), ELISA, immunoperoxidase electron microscopy and immunohistochemistry as well as other peroxidase-antibody based enzymatic assays requiring extremely low background levels, lot-to-lot consistency, high titer and specificity.

**Isotype**

IgG

**Clonality**

Polyclonal

**Purity**

Anti-Mouse IgM HRP antibody was prepared from monospecific antiserum by immunoaffinity chromatography using Mouse IgM coupled to agarose beads followed by solid phase adsorption(s) to remove any unwanted reactivities. Assay by immunoelectrophoresis resulted in a single precipitin arc against anti-Peroxidase, anti-Rabbit Serum, Mouse IgM and Mouse Serum. No reaction was observed against other mouse heavy or light chain proteins.

**Dilution Range**

ELISA: 1:180,000, IHC: 1:500 - 1:2,500, WB: 1:1,000 - 1:5,000