

## Product Datasheet

### Mouse IgM (mu chain) antibody (orb347519)

**Description**

Mouse IgM (mu chain) antibody

**Species/Host**

Rabbit

**Reactivity**

Mouse

**Conjugation**

Unconjugated

**Tested**

ELISA, IHC, WB

**Applications**
**Immunogen**

Mouse IgM whole molecule

**Preservatives**

0.01% (w/v) Sodium Azide

**Form/Appearance**

Liquid (sterile filtered)

**Concentration**

2.2 mg/mL

**Storage**

Store vial at 4° C prior to opening. This product is stable for several weeks at 4° C as an undiluted liquid. Dilute only prior to immediate use. For extended storage aliquot contents and freeze at -20° C or below. Avoid cycles of freezing and thawing.

**Note**

For research use only

**Application notes**

Anti-Mouse IgM mu heavy chain antibody has been tested by ELISA and is suitable for use in immunoelectrophoresis, western-blot, competitive western-blot, ELISA and competitive ELISA assays. Specific conditions for reactivity and signal detection should be optimized by the end user.

**Isotype**

IgG

**Clonality**

Polyclonal

**Purity**

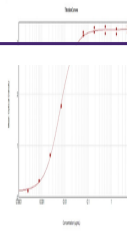
This product was prepared from monospecific antiserum by immunoaffinity chromatography using Mouse IgM coupled to agarose beads followed by solid phase adsorption(s) to remove any unwanted reactivities. Assay by immunoelectrophoresis resulted in a single precipitin arc against anti-Rabbit Serum, Mouse IgM and Mouse Serum. No reaction was observed against other mouse heavy or light chain proteins.

**Dilution Range**

ELISA: 1:20,000 - 1:100,000, IHC: 1:500 - 1:2,500, WB: 1:2,000 - 1:10,000

**Expiration Date**

12 months from date of receipt.



ELISA  
Results of  
Rabbit Anti-  
Mouse IgM  
A...