

Product Datasheet

Mouse IgM (mu chain) antibody (orb347418)

Description

Mouse IgM (mu chain) antibody

Species/Host

Goat

Reactivity

Mouse

Conjugation

Unconjugated

Tested Applications

DOT, ELISA, IHC, WB

Immunogen

Mouse IgM whole molecule

Preservatives

0.01% (w/v) Sodium Azide. 0.02 M Potassium Phosphate, 0.15 M Sodium Chloride, pH 7.2

Form/Appearance

Liquid (sterile filtered)

Concentration

2.20 mg/mL

Storage

Store vial at 4° C prior to opening. This product is stable for several weeks at 4° C as an undiluted liquid. Dilute only prior to immediate use. For extended storage aliquot contents and freeze at -20° C or below. Avoid cycles of freezing and thawing.

Note

For research use only

Application notes

Anti-Mouse IgM (mu chain) has been tested by ELISA, dot blot, and western blot and is suitable for immunoblotting (western or dot blot), ELISA, and immunohistochemistry assays requiring lot-to-lot consistency.

Isotype

IgG

Clonality

Polyclonal

Purity

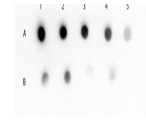
Anti-Mouse IgM (mu chain) was prepared from monospecific antiserum by immunoaffinity chromatography using Mouse IgM coupled to agarose followed by solid phase adsorption(s). Assay by immunoelectrophoresis resulted in a single precipitin arc against anti-Goat Serum, Mouse IgM and Mouse Serum. No reaction was observed against other mouse heavy or light chain proteins.

Dilution Range

ELISA: 1:20,400 - 1:40,400, IHC: 1:1,000 - 1:5,000, WB: 1:2,000 - 1:10,000

Expiration Date

12 months from date of receipt.



Dot Blot of Mouse IgM (mu chain) (GOAT) ...