

Product Datasheet

Mouse IgG IgA IgM (H&L) Antibody Texas Red Conjugated (orb347413)

Description	Mouse IgG IgA IgM (H&L) antibody (Texas Red)
Species/Host	Goat
Reactivity	Mouse
Conjugation	Texas Red
Tested Applications	DOT, FC, FLISA, IF, WB
Immunogen	Mouse IgG IgA and IgM whole molecule
Preservatives	0.01% (w/v) Sodium Azide
Form/Appearance	Lyophilized
Concentration	2.0 mg/mL
Storage	Store vial at 4° C prior to restoration. For extended storage aliquot contents and freeze at -20° C or below. Avoid cycles of freezing and thawing. Centrifuge product if not completely clear after standing at room temperature. This product is stable for several weeks at 4° C as an undiluted liquid. Dilute only prior to immediate use.
Note	For research use only
Application notes	Mouse IgG IgA IgM (H&L) Antibody Texas Red Conjugated has been tested by dot blot and western blot and is designed for immunofluorescence microscopy, fluorescence based plate assays (FLISA) and fluorescent western blotting. This product is also suitable for multiplex analysis, including multicolor imaging, utilizing various commercial platforms.
Isotype	IgG
Clonality	Polyclonal

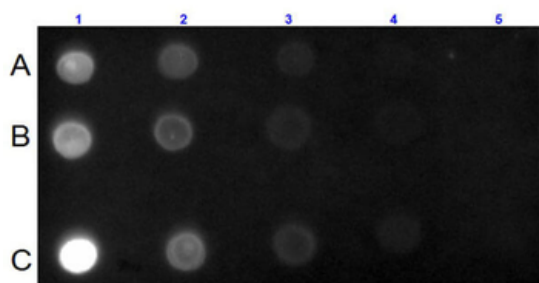
Biorbyt Ltd.

7 Signet Court, Swann's Road,
Cambridge, CB5 8LA, United Kingdom
Email: info@biorbyt.com, support@biorbyt.com
Phone: [+44 \(0\) 1223 859-353](tel:+44(0)1223859353) | Fax: [+1 \(415\) 651-8558](tel:+1(415)6518558)

Biorbyt LLC.

68 TW Alexander Drive,
Durham, NC, 27713, United States
Email: info@biorbyt.com, support@biorbyt.com
Phone: [+1 \(415\) 906-5211](tel:+1(415)9065211) | Fax: [+1 \(415\) 651-8558](tel:+1(415)6518558)

Purity	Mouse IgG IgA IgM (H&L) Antibody Texas Red Conjugated was prepared from polyspecific antiserum by immunoaffinity chromatography using antigens coupled to agarose beads followed by solid phase adsorption(s) to remove any unwanted reactivities. Assay by immunoelectrophoresis resulted in a single precipitin arc against anti-Goat Serum. This product is suitable for the detection of all Mouse immunoglobulin classes, isotypes and chain combinations.
Dilution Range	FLISA: 1:10,000 - 1:50,000, FC: 1:500 - 1:2,500, IF: 1:1,000 - 1:5,000
Expiration Date	12 months from date of receipt.



Dot Blot for Mouse IgG IgA IgM (H&L) Antibody (GOAT) Texas Red™ Conjugated. Lane 1A: 100 ng Ms IgG. Lane 1B: 100 ng Ms IgA. Lane 1C: 100 ng Ms IgM. Lanes 2-5: serial dilution 3 fold of respective Antigen. Primary Antibody: none. Secondary Antibody: Goat anti-Mouse IgG IgA IgM (H&L) Antibody Texas Red™ Conjugated at 1:1000 dilution at RT for 1 hour. Block: orb348637 at RT for 30 minutes.

Biorbyt Ltd.

7 Signet Court, Swann's Road,
Cambridge, CB5 8LA, United Kingdom
Email: info@biorbyt.com, support@biorbyt.com
Phone: [+44 \(0\) 1223 859-353](tel:+44(0)1223859353) | Fax: [+1 \(415\) 651-8558](tel:+1(415)6518558)

Biorbyt LLC.

68 TW Alexander Drive,
Durham, NC, 27713, United States
Email: info@biorbyt.com, support@biorbyt.com
Phone: [+1 \(415\) 906-5211](tel:+1(415)9065211) | Fax: [+1 \(415\) 651-8558](tel:+1(415)6518558)