

## Product Datasheet

### Mouse IgG (H&L) Secondary Antibody Biotin Conjugated Pre-Adsorbed (orb347403)

<b>Description</b>	Mouse IgG (H&L) antibody (Biotin)
<b>Species/Host</b>	Goat
<b>Reactivity</b>	Mouse
<b>Conjugation</b>	Biotin
<b>Tested Applications</b>	ELISA, IHC, WB
<b>Immunogen</b>	Mouse IgG whole molecule
<b>Preservatives</b>	0.01% (w/v) Sodium Azide
<b>Form/Appearance</b>	Lyophilized
<b>Concentration</b>	1.0 mg/mL
<b>Storage</b>	Store second antibody at 4° C prior to restoration. For extended storage aliquot secondary antibody and freeze at -20° C or below. Avoid cycles of freezing and thawing. Centrifuge product if not completely clear after standing at room temperature. This product is stable for several weeks at 4° C as an undiluted liquid. Dilute only prior to immediate use.
<b>Note</b>	For research use only
<b>Application notes</b>	Anti-Mouse IgG Biotin Antibody has been tested by ELISA and is ideal for western blot and are available in a variety of formats and conjugate types.
<b>Isotype</b>	IgG
<b>Clonality</b>	Polyclonal

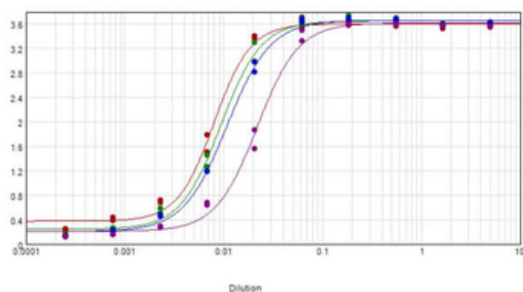
**Biorbyt Ltd.**

7 Signet Court, Swann's Road,  
Cambridge, CB5 8LA, United Kingdom  
Email: [info@biorbyt.com](mailto:info@biorbyt.com), [support@biorbyt.com](mailto:support@biorbyt.com)  
Phone: [+44 \(0\) 1223 859-353](tel:+44(0)1223859353) | Fax: [+1 \(415\) 651-8558](tel:+1(415)6518558)

**Biorbyt LLC.**

68 TW Alexander Drive,  
Durham, NC, 27713, United States  
Email: [info@biorbyt.com](mailto:info@biorbyt.com), [support@biorbyt.com](mailto:support@biorbyt.com)  
Phone: [+1 \(415\) 906-5211](tel:+1(415)9065211) | Fax: [+1 \(415\) 651-8558](tel:+1(415)6518558)

<b>Purity</b>	Mouse Secondary Antibody conjugate was prepared from monospecific antiserum by immunoaffinity chromatography using Mouse IgG coupled to agarose beads followed by solid phase adsorption(s) to remove any unwanted reactivities. Assay by immunoelectrophoresis resulted in a single precipitin arc against anti-biotin, anti-Goat Serum, Mouse IgG and Mouse Serum. No reaction was observed against Bovine, Chicken, Goat, Guinea Pig, Hamster, Horse, Human, Rabbit, Rat and Sheep Serum Proteins.
<b>Dilution Range</b>	ELISA: 1:100,000 - 1:800,000, IHC: 1:1,000 - 1:5,000, WB: 1:2,000 - 1:10,000
<b>Expiration Date</b>	12 months from date of receipt.



ELISA results of purified Goat Anti-Mouse IgG Biotin Conjugated Antibody MinX 10 tested against purified Mouse IgG. Each well was coated in duplicate with 1.0 µg of Mouse IgG (red line). The starting dilution of antibody was 5 µg/ml and the X-axis represents the Log<sub>10</sub> of a 3-fold dilution. This titration is a 4-parameter curve fit where the IC<sub>50</sub> is defined as the titer of the antibody. Assay performed using Blocking buffer, Streptavidin HRP.

**Biorbyt Ltd.**

7 Signet Court, Swann's Road,  
Cambridge, CB5 8LA, United Kingdom  
Email: [info@biorbyt.com](mailto:info@biorbyt.com), [support@biorbyt.com](mailto:support@biorbyt.com)  
Phone: [+44 \(0\) 1223 859-353](tel:+44(0)1223859353) | Fax: [+1 \(415\) 651-8558](tel:+1(415)6518558)

**Biorbyt LLC.**

68 TW Alexander Drive,  
Durham, NC, 27713, United States  
Email: [info@biorbyt.com](mailto:info@biorbyt.com), [support@biorbyt.com](mailto:support@biorbyt.com)  
Phone: [+1 \(415\) 906-5211](tel:+1(415)9065211) | Fax: [+1 \(415\) 651-8558](tel:+1(415)6518558)