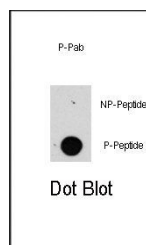
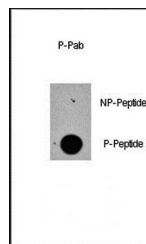


Product Datasheet

Raptor (phospho-Ser863) antibody (orb34737)

Description	Rabbit polyclonal antibody to Raptor (phospho-Ser863)
Species/Host	Rabbit
Reactivity	Human
Conjugation	Unconjugated
Tested Applications	DOT, IHC-P, WB
Immunogen	Synthetic Peptide
Target	RPTOR
Form/Appearance	Purified polyclonal antibody supplied in PBS with 0.09% (W/V) sodium azide. This antibody is purified through a protein A column, followed by peptide affinity purification.
Storage	Maintain refrigerated at 2-8°C for up to 2 weeks. For long term storage store at -20°C in small aliquots to prevent freeze-thaw cycles
Note	For research use only
Isotype	Rabbit IgG
Clonality	Polyclonal
MW	149038
Uniprot ID	Q8N122
NCBI	NP_065812.1
Dilution Range	DOT: 1:500
Expiration Date	12 months from date of receipt.



Dot blot analysis of nitrocellulose memb...