

Product Datasheet

Human IgG (H&L) Antibody Fluorescein Conjugated (orb347345)

| | |
|----------------------------|---|
| Description | Human IgG (H&L) antibody (FITC) |
| Species/Host | Gallus |
| Reactivity | Human |
| Conjugation | FITC |
| Tested Applications | DOT, FC, FLISA, IF |
| Immunogen | Human IgG whole molecule |
| Preservatives | 0.01% (w/v) Sodium Azide |
| Form/Appearance | Lyophilized |
| Concentration | 1.0 mg/mL |
| Storage | Store vial at 4° C prior to restoration. For extended storage aliquot contents and freeze at -20° C or below. Avoid cycles of freezing and thawing. Centrifuge product if not completely clear after standing at room temperature. This product is stable for several weeks at 4° C as an undiluted liquid. Dilute only prior to immediate use. |
| Note | For research use only |
| Application notes | Anti-Human IgG (H&L) Fluorescein has been tested by dot blot and is designed for immunofluorescence microscopy, fluorescence based plate assays (FLISA) and fluorescent western blotting. This product is also suitable for multiplex analysis, including multicolor imaging, utilizing various commercial platforms. |
| Isotype | IgG |
| Clonality | Polyclonal |

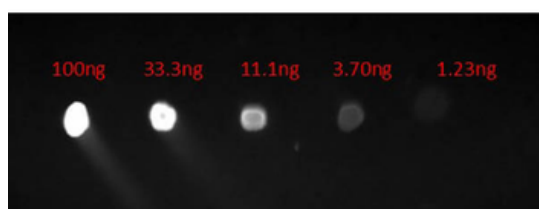
Biorbyt Ltd.

7 Signet Court, Swann's Road,
Cambridge, CB5 8LA, United Kingdom
Email: info@biorbyt.com, support@biorbyt.com
Phone: [+44 \(0\) 1223 859-353](tel:+44(0)1223859353) | Fax: [+1 \(415\) 651-8558](tel:+1(415)6518558)

Biorbyt LLC.

68 TW Alexander Drive,
Durham, NC, 27713, United States
Email: info@biorbyt.com, support@biorbyt.com
Phone: [+1 \(415\) 906-5211](tel:+1(415)9065211) | Fax: [+1 \(415\) 651-8558](tel:+1(415)6518558)

| | |
|------------------------|--|
| Purity | This product was prepared from monospecific antiserum by immunoaffinity chromatography using Human IgG coupled to agarose. Assay by immunoelectrophoresis resulted in a single precipitin arc against anti-Fluorescein, anti-Chicken Serum, Human IgG and Human Serum. |
| Dilution Range | FLISA: 1:10,000 - 1:50,000, FC: 1:500 - 1:2,500, IF: 1:1,000 - 1:5,000 |
| Expiration Date | 12 months from date of receipt. |



Dot Blot of Chicken Anti-HUMAN IgG Fluorescein Conjugated Antibody. Lane 1: 100 ng. Lane 2: 33.3 ng. Lane 3: 11.1 ng. Lane 4: 3.7 ng. Lane 5: 1.23 ng. Secondary Antibody: Ch-a-Hu IgG FITC Conj 1 µg/ml. Blocking Buffer: BlockOut orb348644 for 30 min at RT.

Biorbyt Ltd.

7 Signet Court, Swann's Road,
Cambridge, CB5 8LA, United Kingdom
Email: info@biorbyt.com, support@biorbyt.com
Phone: [+44 \(0\) 1223 859-353](tel:+44(0)1223859353) | Fax: [+1 \(415\) 651-8558](tel:+1(415)6518558)

Biorbyt LLC.

68 TW Alexander Drive,
Durham, NC, 27713, United States
Email: info@biorbyt.com, support@biorbyt.com
Phone: [+1 \(415\) 906-5211](tel:+1(415)9065211) | Fax: [+1 \(415\) 651-8558](tel:+1(415)6518558)