
Product Datasheet

**Human IgG (H&L) antibody (Alkaline Phosphatase)
(orb347326)**

Description

Human IgG (H&L) antibody (Alkaline Phosphatase)

Species/Host

Sheep

Reactivity

Human

Conjugation

AP

Tested

DOT, ELISA, IHC, WB

Applications
Immunogen

Human IgG whole molecule

Preservatives

0.1% (w/v) Sodium Azide

Form/Appearance

Liquid (sterile filtered)

Concentration

1.0 mg/mL

Storage

Store vial at 4° C before opening. DO NOT FREEZE. This product is stable at 4° C as an undiluted liquid. Dilute only prior to immediate use. Freezing alkaline phosphatase conjugates will result in a substantial loss of enzymatic activity.

Note

For research use only

Application notes

Anti-HUMAN IgG (H&L) Alkaline Phosphatase Antibody has been tested by ELISA and dot blot and is suitable for immunoblotting (western or dot blot), ELISA, immunoperoxidase electron microscopy and immunohistochemistry as well as other peroxidase-antibody based enzymatic assays requiring lot-to-lot consistency.

Isotype

IgG

Clonality

Polyclonal

Purity

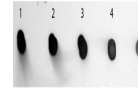
Anti-Human IgG (H&L) (SHEEP) Antibody was prepared from monospecific antiserum by immunoaffinity chromatography using Human IgG coupled to agarose beads followed by solid phase adsorption(s) to remove any unwanted reactivities. Assay by immunoelectrophoresis resulted in a single precipitin arc against anti-Alkaline Phosphatase (calf intestine), anti-Sheep Serum, Human IgG and Human Serum.

Dilution Range

ELISA: 1:2,000 - 1:10,000, IHC: 1:200 - 1:1,000, WB: 1:500 - 1:2,500

Expiration Date

12 months from date of receipt.



Dot Blot of Sheep anti-Human IgG Antibod...