

---

## Product Datasheet

### Human IgG F(c) antibody (FITC) (orb347283)

**Description**

Human IgG F(c) antibody (FITC)

**Species/Host**

Rabbit

**Reactivity**

Human

**Conjugation**

FITC

**Tested**

DOT, FLISA, IF, WB

**Applications**
**Immunogen**

Human IgG F(c) fragment

**Preservatives**

0.01% (w/v) Sodium Azide

**Form/Appearance**

Lyophilized

**Concentration**

2.0 mg/mL

**Storage**

Store vial at 4° C prior to restoration. For extended storage aliquot contents and freeze at -20° C or below. Avoid cycles of freezing and thawing. Centrifuge product if not completely clear after standing at room temperature. This product is stable for several weeks at 4° C as an undiluted liquid. Dilute only prior to immediate use.

**Note**

For research use only

**Application notes**

Anti-Human IgG F(c) Fluorescein Conjugated has been tested by dot blot and western blot and is designed for immunofluorescence microscopy, fluorescence based plate assays (FLISA) and fluorescent western blotting. This product is also suitable for multiplex analysis, including multicolor imaging, utilizing various commercial platforms.

**Isotype**

IgG

**Clonality**

Polyclonal

**Purity**

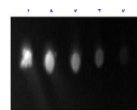
This product was prepared from monospecific antiserum by immunoaffinity chromatography using Human IgG coupled to agarose beads followed by solid phase adsorption(s) to remove any unwanted reactivities. Assay by immunoelectrophoresis resulted in a single precipitin arc against anti-Fluorescein, anti-Rabbit Serum, Human IgG, Human IgG F(c) and Human Serum. No reaction was observed against Human IgG F(ab).

**Dilution Range**

FLISA: 1:10,000 - 1:50,000, IF: 1:1,000 - 1:5,000

**Expiration Date**

12 months from date of receipt.



Dot Blot results of Rabbit Anti-Human Ig...