

---

## Product Datasheet

**Human IgM (mu chain) antibody (Alkaline Phosphatase) (orb347236)**

**Description**

Human IgM (mu chain) antibody (Alkaline

**Species/Host**

Goat

**Reactivity**

Human

**Conjugation**

AP

**Tested Applications**

DOT, ELISA, IHC, WB

**Immunogen**

Human IgM whole molecule

**Preservatives**

0.01% (w/v) Sodium Azide

**Form/Appearance**

Liquid (sterile filtered)

**Concentration**

1.0 mg/mL

**Storage**

Store vial at 4° C before opening. DO NOT FREEZE. This product is stable at 4° C as an undiluted liquid. Dilute only prior to immediate use. Freezing alkaline phosphatase conjugates will result in a substantial loss of enzymatic activity.

**Note**

For research use only

**Application notes**

Anti-Human IgM (mu heavy chain) Alkaline Phosphatase has been tested by dot blot and ELISA and is suitable for immunoblotting (western or dot blot), ELISA, immunoelectron microscopy and immunohistochemistry as well as other antibody based enzymatic assays requiring lot-to-lot consistency.

**Isotype**

IgG

**Clonality**

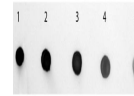
Polyclonal

**Purity**

Anti-Human IgM mu heavy chain antibody was prepared from monospecific antiserum by immunoaffinity chromatography using Human IgM coupled to agarose beads followed by solid phase adsorption(s) to remove any unwanted reactivities. Assay by immunoelectrophoresis resulted in a single precipitin arc against anti-Alkaline Phosphatase (calf intestine), anti-Goat Serum, Human IgM and Human Serum. No reaction was observed against other human heavy or light chain proteins.

**Dilution Range**

ELISA: 1:2,000 - 1:10,000, IHC: 1:200 - 1:1,000, WB: 1:500 - 1:2,500



Dot Blot of Goat anti-Human IgM (mu chai...