

---

## Product Datasheet

**Human IgG (H&L) antibody (Alkaline Phosphatase)  
(orb347232)**

**Description**

Human IgG (H&amp;L) antibody (Alkaline Phosphatase)

**Species/Host**

Goat

**Reactivity**

Human

**Conjugation**

AP

**Tested Applications**

DOT, ELISA, IHC, WB

**Immunogen**

Human IgG whole molecule

**Preservatives**

0.1% (w/v) Sodium Azide

**Form/Appearance**

Liquid (sterile filtered)

**Concentration**

1.0 mg/mL

**Storage**

Store vial at 4° C before opening. DO NOT FREEZE. This product is stable at 4° C as an undiluted liquid. Dilute only prior to immediate use. Freezing alkaline phosphatase conjugates will result in a substantial loss of enzymatic activity.

**Note**

For research use only

**Application notes**

Anti-Human IgG (H&L) Alkaline Phosphatase Antibody has been tested by ELISA, dot blot, and western blot and is suitable for Immunohistochemistry applications. Antibody should be optimized by end user for specific reactive conditions.

**Isotype**

IgG

**Clonality**

Polyclonal

**Purity**

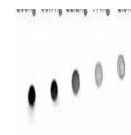
Anti-Human IgG (H&L) was prepared from monospecific antiserum by immunoaffinity chromatography using Human IgG coupled to agarose beads. Assay by immunoelectrophoresis resulted in a single precipitin arc against anti-Alkaline Phosphatase (calf intestine), anti-Goat Serum, Human IgG and Human Serum.

**Dilution Range**

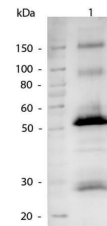
ELISA: 1:4,500, IHC: 1:200 - 1:1,000, WB: 1:500 - 1:2,500

**Expiration Date**

12 months from date of receipt.



Dot Blot of Alkaline Phosphatase conjuga...



Western Blot of Alkaline Phosphatase con...