

Product Datasheet

Human IgG (H&L) Antibody Peroxidase Conjugated Pre-Adsorbed (orb347230)

Description	Human IgG (H&L) antibody (Peroxidase)
Species/Host	Goat
Reactivity	Human
Conjugation	HRP
Tested Applications	ELISA, IHC, WB
Immunogen	Human IgG whole molecule
Preservatives	0.01% (w/v) Gentamicin Sulfate. Do NOT add Sodium Azide!
Form/Appearance	Lyophilized
Concentration	1.0 mg/mL
Storage	Store vial at 4° C prior to restoration. For extended storage aliquot contents and freeze at -20° C or below. Avoid cycles of freezing and thawing. Centrifuge product if not completely clear after standing at room temperature. This product is stable for several weeks at 4° C as an undiluted liquid. Dilute only prior to immediate use.
Note	For research use only
Application notes	Anti-Human IgG (H&L) Peroxidase Conjugate has been tested by ELISA and western blot and is suitable for immunoblotting (western or dot blot), ELISA, immunoperoxidase electron microscopy and immunohistochemistry as well as other peroxidase-antibody based enzymatic assays requiring lot-to-lot consistency.
Isotype	IgG
Clonality	Polyclonal

Biorbyt Ltd.

7 Signet Court, Swann's Road,
Cambridge, CB5 8LA, United Kingdom
Email: info@biorbyt.com, support@biorbyt.com
Phone: [+44 \(0\) 1223 859-353](tel:+44(0)1223859353) | Fax: [+1 \(415\) 651-8558](tel:+1(415)6518558)

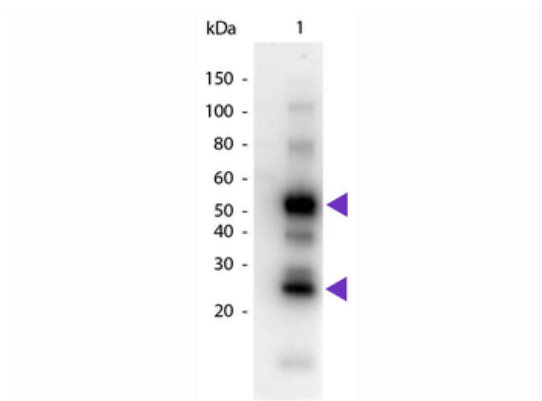
Biorbyt LLC.

68 TW Alexander Drive,
Durham, NC, 27713, United States
Email: info@biorbyt.com, support@biorbyt.com
Phone: [+1 \(415\) 906-5211](tel:+1(415)9065211) | Fax: [+1 \(415\) 651-8558](tel:+1(415)6518558)

- Purity** Human IgG (H&L) Antibody Peroxidase Conjugated was prepared from monospecific antiserum by immunoaffinity chromatography using Human IgG coupled to agarose beads followed by solid phase adsorption(s) to remove any unwanted reactivities. Assay by immunoelectrophoresis resulted in a single precipitin arc against anti-Peroxidase, anti-Goat Serum, Human IgG and Human Serum. No reaction was observed against Mouse Serum Proteins.
- Dilution Range** ELISA: 1:400,000 - 1:600,000, IHC: 1:500 - 1:2,500, WB: 1:2,000 - 1:20,000
- Expiration Date** 12 months from date of receipt.

ELISA target and detector	NDO-LID		
	IgM	IgG	IgG/M (protein A)
Sensitivity	78.0 (73.0-83.0)	81.6 (77.0-86.1)	86.3 (82.2-90.3)
Specificity	97.0 (94.0-100)	95.6 (92.0-99.4)	93.6 (93.0-100)
PPV	98.3 (96.5-100)	97.6 (95.5-99.7)	98.1 (96.3-100)
NPV	66.7 (60.0-73.5)	70.2 (63.4-77.1)	76.1 (69.5-82.8)

Diagnostic accuracy of detecting IgG and IgG/M antibodies against natural octyl disaccharide-leprosy IDRI diagnostic (NDO-LID) using HRP anti-human IgG (p/n orb347230), HRP anti-human IgM (p/n orb347297), and HRP Protein A. ELISA = enzyme-linked immunosorbent assay; NPV = negative predictive value; PPV = positive predictive value. Results are shown as percent, with confidence intervals in parentheses.



Western Blot of Goat anti-Human IgG Pre-Adsorbed Peroxidase Conjugated Secondary Antibody. Lane 1: Human IgG. Lane 2: None. Load: 50 ng per lane. Primary antibody: None. Secondary antibody: Peroxidase goat secondary antibody at 1:1000 for 60 min at RT. Block: orb348637 for 30 min at RT. Predicted/Observed size: 25 & 55 kDa, 25 & 55 kDa for Human IgG. Other band(s): Human IgG splice variants and isoforms.

Biorbyt Ltd.

7 Signet Court, Swann's Road,
Cambridge, CB5 8LA, United Kingdom
Email: info@biorbyt.com, support@biorbyt.com
Phone: [+44 \(0\) 1223 859-353](tel:+44(0)1223859353) | Fax: [+1 \(415\) 651-8558](tel:+1(415)6518558)

Biorbyt LLC.

68 TW Alexander Drive,
Durham, NC, 27713, United States
Email: info@biorbyt.com, support@biorbyt.com
Phone: [+1 \(415\) 906-5211](tel:+1(415)9065211) | Fax: [+1 \(415\) 651-8558](tel:+1(415)6518558)