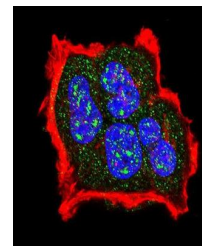
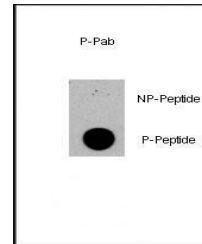


Product Datasheet

TSC2 (phospho-Ser1420) antibody (orb34722)

Description	Rabbit polyclonal to TSC2 (phospho-Ser1420)
Species/Host	Rabbit
Reactivity	Human
Conjugation	Unconjugated
Tested Applications	DOT, IF
Immunogen	Synthetic Peptide
Target	TSC2
Form/Appearance	Purified polyclonal antibody supplied in PBS with 0.09% (W/V) sodium azide. This antibody is purified through a protein A column, followed by peptide affinity purification.
Storage	Maintain refrigerated at 2-8°C for up to 2 weeks. For long term storage store at -20°C in small aliquots to prevent freeze-thaw cycles
Note	For research use only
Isotype	Rabbit IgG
Clonality	Polyclonal
MW	200608
Uniprot ID	P49815
NCBI	NP_001070651.1 , NP_000539.2 , NP_001107854.1
Dilution Range	DOT: 1:500, IF/ICC: 1:10-50
Expiration Date	12 months from date of receipt.



Immunofluorescence analysis of MCF-7 cel...