

---

## Product Datasheet

**Human IgG IgA IgM (H&L) antibody (Peroxidase)  
(orb347193)**

**Description**

Human IgG IgA IgM (H&amp;L) antibody (Peroxidase)

**Species/Host**

Goat

**Reactivity**

Human

**Conjugation**

HRP

**Tested**

ELISA, IHC, IP, WB

**Applications**
**Immunogen**

Anti-Human IgG IgA IgM (H&L) was produced by repeated immunization with Human IgG, IgA and IgM whole molecules in goat.

**Preservatives**

0.01% (w/v) Gentamicin Sulfate. Do NOT add Sodium Azide!

**Form/Appearance**

Lyophilized

**Concentration**

2.0 mg/mL

**Storage**

Store vial at 4° C prior to restoration. For extended storage aliquot contents and freeze at -20° C or below. Avoid cycles of freezing and thawing. Centrifuge product if not completely clear after standing at room temperature. This product is stable for several weeks at 4° C as an undiluted liquid. Dilute only prior to immediate use.

**Note**

For research use only

**Application notes**

Anti-Human IgG IgA IgM (H&L) Peroxidase Antibody has been tested by ELISA and western blot and is suitable for use in immunoelectrophoresis, western-blot, competitive western-blot, ELISA and competitive ELISA assays. Specific conditions for reactivity and signal detection should be optimized by the end user.

**Isotype**

IgG

**Clonality**

Polyclonal

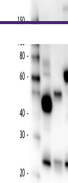
**Purity**

This product was prepared from polyspecific antiserum by immunoaffinity chromatography using antigens coupled to agarose beads. Assay by immunoelectrophoresis resulted in a single precipitin arc against anti-Peroxidase, anti-Goat Serum, Human IgG, Human IgA and Human IgM. This reagent is suitable for the detection of all Human immunoglobulin subclasses and chain combinations.

**Dilution Range**

ELISA: 1:20,000 - 1:100,000, IHC: 1:1,000 - 1:5,000, IP: 1:1,000 - 1:5,000, WB: 1:2,000 -

10 1 2 3



Western Blot of Goat anti-Human IgG, IgA...