
Product Datasheet

**Human IgG IgA IgM (H&L) antibody (FITC)
(orb347190)**

Description

Human IgG IgA IgM (H&L) antibody (FITC)

1 2 3 4 5

Species/Host

Goat

Reactivity

Human

Conjugation

FITC

Tested

DOT, FC, FLISA, IF, WB

Applications
Immunogen

Human IgG, IgA and IgM whole molecules

Preservatives

0.01% (w/v) Sodium Azide

Form/Appearance

Lyophilized

Concentration

2.0 mg/mL

Storage

Store vial at 4° C prior to restoration. For extended storage aliquot contents and freeze at -20° C or below. Avoid cycles of freezing and thawing. Centrifuge product if not completely clear after standing at room temperature. This product is stable for several weeks at 4° C as an undiluted liquid. Dilute only prior to immediate use.

Note

For research use only

Application notes

Anti-Human IgG IgA IgM (H&L) Fluorescein Antibody has been tested by dot blot and western blot and is designed for immunofluorescence microscopy, fluorescence based plate assays (FLISA) and fluorescent western blotting. This product is also suitable for multiplex analysis, including multicolor imaging, utilizing various commercial platforms.

Isotype

IgG

Clonality

Polyclonal

Purity

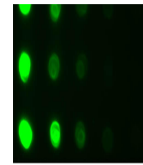
This product was prepared from polyspecific antiserum by immunoaffinity chromatography using antigens coupled to agarose beads. Assay by immunoelectrophoresis resulted in a single precipitin arc against anti-Fluorescein, anti-Goat Serum, Human IgG, Human IgA and Human IgM. This reagent is suitable for the detection of all Human isotypes and chain combinations.

Dilution Range

FLISA: 1:10,000 - 1:50,000, FC: 1:500 - 1:2,500, IF: 1:1,000 - 1:5,000

Expiration Date

12 months from date of receipt.



Dot Blot of
Goat anti-
Human IgG
IgA IgM ...