
Product Datasheet

Horse IgG F(ab')₂ antibody (Alkaline Phosphatase) (orb347166)

Description

 Horse IgG F(ab')₂ antibody (Alkaline Phosphatase)

Species/Host

Rabbit

Reactivity

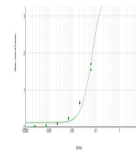
Equine

Conjugation

AP

Tested

ELISA, IHC, WB

Applications

 ELISA
Results of
Rabbit Anti-
Horse IgG
F...

Immunogen

 Horse IgG F(ab')₂ fragment

Preservatives

0.1% (w/v) Sodium Azide

Form/Appearance

Liquid (sterile filtered)

Concentration

1.0 mg/mL

Storage

Store vial at 4° C before opening. DO NOT FREEZE. This product is stable at 4° C as an undiluted liquid. Dilute only prior to immediate use. Freezing alkaline phosphatase conjugates will result in a substantial loss of enzymatic activity.

Note

For research use only

Application notes

Anti-Horse IgG F(ab')₂ Alkaline Phosphatase conjugate has been tested by ELISA and is suitable for immunoblotting (western or dot blot), ELISA, immunoelectron microscopy and immunohistochemistry as well as other antibody-based enzymatic assays requiring lot-to-lot consistency.

Isotype

IgG

Clonality

Polyclonal

Purity

This product was prepared from monospecific antiserum by immunoaffinity chromatography using Horse IgG coupled to agarose beads followed by solid phase adsorption(s) to remove any unwanted reactivities. Assay by immunoelectrophoresis resulted in a single precipitin arc against anti-Alkaline Phosphatase (calf intestine), anti-Rabbit Serum, Horse IgG, Horse IgG F(ab')₂ and Horse Serum. No reaction was observed against Horse IgG F(c).

Dilution Range

ELISA: 1:2,000 - 1:8,000, IHC: 1:200 - 1:1,000, WB: 1:500 - 1:2,000

Expiration Date

12 months from date of receipt.