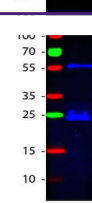

Product Datasheet

Guinea Pig IgG (H&L) antibody (FITC) (orb347098)

Description

Guinea Pig IgG (H&L) antibody (FITC)

KDa 250


Species/Host

Donkey

Reactivity

Guinea pig

Conjugation

FITC

Tested

FLISA, IF, WB

Applications

 Western
Blot of
Donkey
anti-Guinea
Pig I...

Immunogen

Guinea Pig IgG whole molecule

Preservatives

0.01% (w/v) Sodium Azide

Form/Appearance

Lyophilized

Concentration

1.0 mg/mL

Storage

Store vial at 4° C prior to restoration. For extended storage aliquot contents and freeze at -20° C or below. Avoid cycles of freezing and thawing. Centrifuge product if not completely clear after standing at room temperature. This product is stable for several weeks at 4° C as an undiluted liquid. Dilute only prior to immediate use.

Note

For research use only

Application notes

Anti-Guinea Pig IgG Fluorescein Antibody has been tested by western blot. This product is designed for immunofluorescence microscopy, fluorescence based plate assays (FLISA) and fluorescent western blotting. This product is also suitable for multiplex analysis, including multicolor imaging, utilizing various commercial platforms.

Isotype

IgG

Clonality

Polyclonal

Purity

This product was prepared from monospecific antiserum by immunoaffinity chromatography using Guinea Pig IgG coupled to agarose beads followed by conjugation to fluorochrome and extensive dialysis against the buffer stated above. Assay by immunoelectrophoresis resulted in a single precipitin arc against anti-fluorescein, anti-Donkey Serum, Guinea Pig IgG and Guinea Pig Serum. No reaction was observed against Bovine, Chicken, Goat, Hamster, Horse, Human, Mouse, Rabbit, Rat and Sheep Serum Proteins. This antibody will react with heavy chains of Guinea Pig IgG and with light chains of most Guinea Pig immunoglobulins.

Dilution Range

FLISA: 1:10,000 - 1:50,000, IF: 1:1,000 - 1:5,000