
Product Datasheet

Guinea Pig IgG F(ab')₂ antibody (Alkaline Phosphatase) (orb347089)

Description

 Guinea Pig IgG F(ab')₂ antibody (Alkaline

Species/Host

Rabbit

Reactivity

Guinea pig

Conjugation

AP

Tested Applications

ELISA, IHC, WB

Immunogen

 Guinea Pig IgG F(ab')₂ fragment

Preservatives

0.1% (w/v) Sodium Azide

Form/Appearance

Liquid (sterile filtered)

Concentration

1.0 mg/mL

Storage

Store vial at 4° C before opening. DO NOT FREEZE. This product is stable at 4° C as an undiluted liquid. Dilute only prior to immediate use. Freezing alkaline phosphatase conjugates will result in a substantial loss of enzymatic activity.

Note

For research use only

Application notes

Anti-Guinea Pig IgG F(ab')₂ Alkaline Phosphatase conjugate has been tested by ELISA and is suitable for immunoblotting (western or dot blot), ELISA, immunoelectron microscopy and immunohistochemistry as well as other antibody-based enzymatic assays requiring lot-to-lot consistency.

Isotype

IgG

Clonality

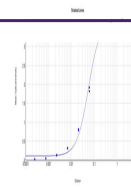
Polyclonal

Purity

This product was prepared from monospecific antiserum by immunoaffinity chromatography using Guinea Pig IgG coupled to agarose beads followed by solid phase adsorption(s) to remove any unwanted reactivities. Assay by immunoelectrophoresis resulted in a single precipitin arc against anti-Alkaline Phosphatase (calf intestine), anti-Rabbit Serum, Guinea Pig IgG, Guinea Pig IgG F(ab')₂ and Guinea Pig Serum. No reaction was observed against Guinea Pig IgG F(c).

Dilution Range

ELISA: 1:2,000 - 1:8,000, IHC: 1:200 - 1:1,000, WB: 1:500 - 1:2,000



ELISA
Results of
Purified
Rabbit
Anti-Gu...