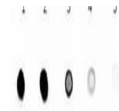

Product Datasheet

**GOAT IgG (H&L) antibody (Alkaline Phosphatase)
(orb346996)**

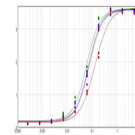
Description

GOAT IgG (H&L) antibody (Alkaline Phosphatase)

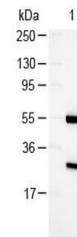
Species/Host	Rabbit
Reactivity	Goat
Conjugation	AP
Tested Applications	DOT, ELISA, IHC, WB
Immunogen	Goat IgG whole molecule
Preservatives	0.09% (w/v) Sodium Azide
Form/Appearance	Liquid (sterile filtered)
Concentration	1.0 mg/mL
Storage	Store secondary antibody at 4° C before opening. DO NOT FREEZE. Anti-Goat secondary antibodies are stable at 4° C as an undiluted liquid. Dilute only prior to immediate use. Freezing alkaline phosphatase conjugates will result in a substantial loss of enzymatic activity.
Note	For research use only
Application notes	Anti-Goat IgG Alkaline Phosphatase conjugate has been tested by ELISA, dot blot, and western blot and is suitable for immunoelectron microscopy and immunohistochemistry as well as other antibody-based enzymatic assays requiring lot-to-lot consistency.
Isotype	IgG
Clonality	Polyclonal
Purity	Anti-Goat Secondary Antibody was prepared from monospecific antiserum by immunoaffinity chromatography using Goat IgG coupled to agarose beads followed by solid phase adsorption(s) to remove any unwanted reactivities. Assay by immunoelectrophoresis resulted in a single precipitin arc against anti-Alkaline Phosphatase (calf intestine), anti-Rabbit Serum, Goat IgG and Goat Serum.
Dilution Range	ELISA: 1:2,000 - 1:13,000, IHC: 1:200 - 1:1,000, WB: 1:500 - 1:2,500
Expiration Date	12 months from date of receipt.



Dot Blot of Goat IgG (H&L) Secondary Ant...



ELISA results of purified Rabbit Anti-Goat...



Western Blot of Rabbit anti-Goat Antibod...