
Product Datasheet

Dog IgG F(c) antibody (Alkaline Phosphatase) (orb346959)

Description

Dog IgG F(c) antibody (Alkaline Phosphatase)

Species/Host

Rabbit

Reactivity

Canine

Conjugation

AP

Tested

DOT, ELISA, IHC, WB

Applications
Immunogen

Dog IgG F(c) fragment

Preservatives

0.1% (w/v) Sodium Azide

Form/Appearance

Liquid (sterile filtered)

Concentration

1.0 mg/mL

Storage

Store vial at 4° C before opening. DO NOT FREEZE. This product is stable at 4° C as an undiluted liquid. Dilute only prior to immediate use. Freezing alkaline phosphatase conjugates will result in a substantial loss of enzymatic activity.

Note

For research use only

Application notes

Anti-Dog IgG F(c) Alkaline Phosphatase has been tested by ELISA and dot blot. This product has been assayed against 1.0 ug of Dog IgG in a standard capture ELISA using pNPP p-nitrophenyl phosphate code # NPP-10 as a substrate for 30 minutes at room temperature. A working dilution of 1:3,000 to 1:44,000 of the reconstitution concentration is suggested for this product.

Isotype

IgG

Clonality

Polyclonal

Purity

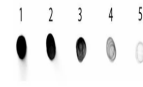
This product was prepared from monospecific antiserum by immunoaffinity chromatography using Dog IgG coupled to agarose beads followed by solid phase adsorption(s) to remove any unwanted reactivities. Assay by immunoelectrophoresis resulted in a single precipitin arc against anti-Alkaline Phosphatase (calf intestine), anti-Rabbit Serum, Dog IgG, Dog IgG F(c) and Dog Serum. No reaction was observed against Dog IgG F(ab).

Dilution Range

ELISA: 1:2,000 - 1:10,000, IHC: 1:200 - 1:1,000, WB: 1:500 - 1:2,500

Expiration Date

12 months from date of receipt.



Dot Blot of Rabbit anti-Dog IgG Fc Antib...