
Product Datasheet

Dog IgG (H&L) antibody (FITC) (orb346936)

Description

Dog IgG (H&L) antibody (FITC)

Species/Host

Goat

Reactivity

Canine

Conjugation

FITC

Tested Applications

DOT, FC, FLISA, IF

Immunogen

Dog IgG whole molecule

Preservatives

0.01% (w/v) Sodium Azide

Form/Appearance

Lyophilized

Concentration

2.0 mg/mL

Storage

Store vial at 4° C prior to restoration. For extended storage aliquot contents and freeze at -20° C or below. Avoid cycles of freezing and thawing. Centrifuge product if not completely clear after standing at room temperature. This product is stable for several weeks at 4° C as an undiluted liquid. Dilute only prior to immediate use.

Note

For research use only

Application notes

Anti-Dog Igg Fluorescein conjugated antibody has been tested by dot blot. This product is designed for immunofluorescence microscopy, fluorescence based plate assays (FLISA) and fluorescent western blotting. This product is also suitable for multiplex analysis, including multicolor imaging, utilizing various commercial platforms.

Isotype

IgG

Clonality

Polyclonal

Purity

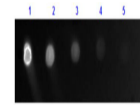
This product was prepared from monospecific antiserum by immunoaffinity chromatography using Dog IgG coupled to agarose beads followed by solid phase adsorption(s) to remove any unwanted reactivities. Assay by immunoelectrophoresis resulted in a single precipitin arc against anti-Fluorescein, anti-Goat Serum, Dog IgG and Dog Serum.

Dilution Range

FLISA: 1:10,000 - 1:50,000, FC: 1:500 - 1:2,500, IF: 1:1,000 - 1:5,000

Expiration Date

12 months from date of receipt.



Dot Blot results of Goat Anti-Dog IgG An...