

## Product Datasheet

# Chicken IgG (H&L) Antibody Alkaline Phosphatase Conjugated Pre-Adsorbed (orb346929)

<b>Description</b>	Chicken IgG (H&L) antibody (Alkaline Phosphatase)
<b>Species/Host</b>	Donkey
<b>Reactivity</b>	Gallus
<b>Conjugation</b>	AP
<b>Tested Applications</b>	ELISA, IHC, WB
<b>Immunogen</b>	Chicken IgG whole molecule
<b>Preservatives</b>	0.1% (w/v) Sodium Azide
<b>Form/Appearance</b>	Liquid (sterile filtered)
<b>Concentration</b>	1.0 mg/mL
<b>Storage</b>	Store vial at 4° C before opening. DO NOT FREEZE. This product is stable at 4° C as an undiluted liquid. Dilute only prior to immediate use. Freezing alkaline phosphatase conjugates will result in a substantial loss of enzymatic activity.
<b>Note</b>	For research use only
<b>Application notes</b>	Anti-Chicken IgG Alkaline Phosphatase antibody has been tested by ELISA and is suitable for immunoblotting (western or dot blot), ELISA, immunoelectron microscopy and immunohistochemistry as well as other antibody based enzymatic assays requiring lot-to-lot consistency.
<b>Isotype</b>	IgG
<b>Clonality</b>	Polyclonal

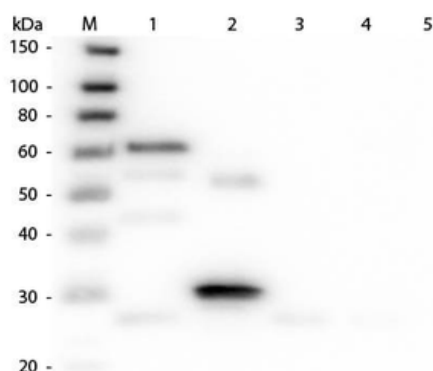
**Biorbyt Ltd.**

7 Signet Court, Swann's Road,  
Cambridge, CB5 8LA, United Kingdom  
Email: [info@biorbyt.com](mailto:info@biorbyt.com), [support@biorbyt.com](mailto:support@biorbyt.com)  
Phone: [+44 \(0\) 1223 859-353](tel:+44(0)1223859353) | Fax: [+1 \(415\) 651-8558](tel:+1(415)6518558)

**Biorbyt LLC.**

68 TW Alexander Drive,  
Durham, NC, 27713, United States  
Email: [info@biorbyt.com](mailto:info@biorbyt.com), [support@biorbyt.com](mailto:support@biorbyt.com)  
Phone: [+1 \(415\) 906-5211](tel:+1(415)9065211) | Fax: [+1 \(415\) 651-8558](tel:+1(415)6518558)

<b>Purity</b>	This product was prepared from monospecific antiserum by immunoaffinity chromatography using Chicken IgG coupled to agarose beads followed by conjugation and extensive dialysis against the buffer stated above. Assay by immunoelectrophoresis resulted in a single precipitin arc against anti-Donkey Serum, anti-Alkaline Phosphatase, Chicken IgG and Chicken Serum. No reaction was observed against Bovine, Goat, Guinea Pig, Hamster, Horse, Human, Mouse, Rabbit, Rat and Sheep Serum Proteins. This antibody will react with heavy chains of Chicken IgG and with light chains of most Chicken immunoglobulins.
<b>Dilution Range</b>	ELISA: 1:2,000 - 1:10,000, IHC: 1:200 - 1:1,000, WB: 1:500 - 1:2,500
<b>Expiration Date</b>	12 months from date of receipt.



Western Blot of Unconjugated Anti-Chicken IgG (H&L) (DONKEY) Antibody (Min X Bv Gt GP Ham Hs Hu Ms Rb Rt & Sh Serum Proteins) (p/n orb346926). Lane M: 3  $\mu$ l Molecular Ladder. Lane 1: Chicken IgG whole molecule (p/n orb2652774). Lane 2: Chicken IgG F(c) Fragment (p/n orb346051). Lane 3: Chicken IgG Fab Fragment (p/n orb2652771). Lane 4: Chicken IgM Whole Molecule (p/n orb346054). Lane 5: Chicken Serum. All samples were reduced. Load: 50 ng per lane. Block: orb348637 for 30 min at RT. Primary Antibody: Anti-Chicken IgG (H&L) (DONKEY) Antibody (Min X Bv Gt GP Ham Hs Hu Ms Rb Rt & Sh Serum Proteins) (p/n orb346926) 1:3000 for 60 min at RT. Secondary antibody: Anti-Donkey IgG (GOAT) Peroxidase Conjugated Antibody (p/n orb347994) 1:40000 in orb348637 for 30 min at RT. Predicted/Observed Size: 25 and 72 kDa for Chicken IgY and Serum, 25 kDa for F(c) and Fab, 75 kDa for IgM. Chicken F(c) migrates slightly higher.

**Biorbyt Ltd.**

7 Signet Court, Swann's Road,  
Cambridge, CB5 8LA, United Kingdom  
Email: [info@biorbyt.com](mailto:info@biorbyt.com), [support@biorbyt.com](mailto:support@biorbyt.com)  
Phone: [+44 \(0\) 1223 859-353](tel:+44(0)1223859353) | Fax: [+1 \(415\) 651-8558](tel:+1(415)6518558)

**Biorbyt LLC.**

68 TW Alexander Drive,  
Durham, NC, 27713, United States  
Email: [info@biorbyt.com](mailto:info@biorbyt.com), [support@biorbyt.com](mailto:support@biorbyt.com)  
Phone: [+1 \(415\) 906-5211](tel:+1(415)9065211) | Fax: [+1 \(415\) 651-8558](tel:+1(415)6518558)