
Product Datasheet

Chicken IgG (H&L) antibody (FITC) (orb346927)

Description

Chicken IgG (H&L) antibody (FITC)

Species/Host

Donkey

Reactivity

Gallus

Conjugation

FITC

Tested Applications

DOT, FC, FLISA, IF, WB

Immunogen

Chicken IgG whole molecule

Preservatives

0.01% (w/v) Sodium Azide

Form/Appearance

Lyophilized

Concentration

1 mg/mL

Storage

Store vial at 4° C prior to restoration. For extended storage aliquot contents and freeze at -20° C or below. Avoid cycles of freezing and thawing. Centrifuge product if not completely clear after standing at room temperature. This product is stable for several weeks at 4° C as an undiluted liquid. Dilute only prior to immediate use.

Note

For research use only

Application notes

Anti-Chicken IgG Fluorescein Antibody has been tested by dot blot and western blot. This product is suitable for immunomicroscopy and flow cytometry or FACS analysis as well as other antibody based fluorescent assays requiring extremely low background levels, absence of F(c) mediated binding, lot-to-lot consistency, high titer and specificity.

Isotype

IgG

Clonality

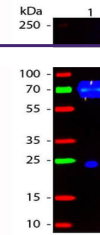
Polyclonal

Purity

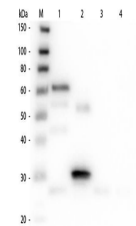
This product was prepared from monospecific antiserum by immunoaffinity chromatography using Chicken IgG coupled to agarose beads followed by conjugation to fluorochrome and extensive dialysis against the buffer stated above. Assay by immunoelectrophoresis resulted in a single precipitin arc against anti-fluorescein, anti-Donkey Serum, Chicken IgG and Chicken Serum. No reaction was observed against Bovine, Goat, Guinea Pig, Hamster, Horse, Human, Mouse, Rabbit, Rat and Sheep Serum Proteins. This antibody will react with heavy chains of Chicken IgG and with light chains of most Chicken immunoglobulins.

Dilution Range

FLISA: 1:10,000 - 1:50,000, FC: 1:500 - 1:2,500, IF:



Western Blot of Fluorescein conjugated D...



Western Blot of Unconjugated Anti-Chicke...