
Product Datasheet

Chicken IgG (H&L) antibody (TRITC) (orb346925)

Description

Chicken IgG (H&L) antibody (TRITC)

Species/Host

Donkey

Reactivity

Gallus

Conjugation

TRITC

Tested Applications

FLISA, IF, WB

Immunogen

Chicken IgG whole molecule

Preservatives

0.01% (w/v) Sodium Azide

Form/Appearance

Lyophilized

Concentration

1.0 mg/mL

Storage

Store vial at 4° C prior to restoration. For extended storage aliquot contents and freeze at -20° C or below. Avoid cycles of freezing and thawing. Centrifuge product if not completely clear after standing at room temperature. This product is stable for several weeks at 4° C as an undiluted liquid. Dilute only prior to immediate use.

Note

For research use only

Application notes

Anti-Chicken IgG Antibody Rhodamine conjugated has been tested by western blot. This product is designed for immunofluorescence microscopy, fluorescence based plate assays (FLISA) and fluorescent western blotting. This product is also suitable for multiplex analysis, including multicolor imaging, utilizing various commercial platforms.

Isotype

IgG

Clonality

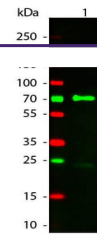
Polyclonal

Purity

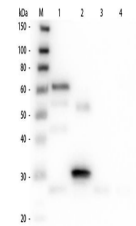
This product was prepared from monospecific antiserum by immunoaffinity chromatography using Chicken IgG coupled to agarose beads followed by conjugation and extensive dialysis against the buffer stated above. Assay by immunoelectrophoresis resulted in a single precipitin arc against anti-Donkey Serum, Chicken IgG and Chicken Serum. No reaction was observed against Bovine, Goat, Guinea Pig, Hamster, Horse, Human, Mouse, Rabbit, Rat and Sheep Serum Proteins. This antibody will react with heavy chains of Chicken IgG and with light chains of most Chicken immunoglobulins.

Dilution Range

FLISA: 1:10,000 - 1:50,000, IF: 1:1,000 - 1:5,000



Western Blot of Donkey anti-Chicken IgG ...



Western Blot of Unconjugated Anti-Chicke...