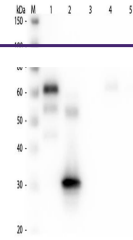

Product Datasheet

Chicken IgG F(c) antibody (Alkaline Phosphatase) (orb346917)

Description

Chicken IgG F(c) antibody (Alkaline Phosphatase)


 Western Blot
of
Unconjugated
Anti-Chicke...

Species/Host

Rabbit

Reactivity

Gallus

Conjugation

AP

Tested

ELISA, IHC, WB

Applications
Immunogen

Chicken IgG F(c) fragment

Preservatives

0.1% (w/v) Sodium Azide

Form/Appearance

Liquid (sterile filtered)

Concentration

1.0 mg/mL

Storage

Store vial at 4° C before opening. DO NOT FREEZE. This product is stable at 4° C as an undiluted liquid. Dilute only prior to immediate use. Freezing alkaline phosphatase conjugates will result in a substantial loss of enzymatic activity.

Note

For research use only

Application notes

Anti-Chicken IgG F(c) Antibody Alkaline Phosphatase Conjugated has been tested by ELISA. This product has been assayed against 1.0 ug of Chicken IgG in a standard capture ELISA using pNPP p-nitrophenyl phosphate code # NPP-10 as a substrate for 30 minutes at room temperature. A working dilution of 1:2,000 to 1:9,000 of the reconstitution concentration is suggested for this product.

Isotype

IgG

Clonality

Polyclonal

Purity

This product was prepared from monospecific antiserum by immunoaffinity chromatography using Chicken IgG coupled to agarose beads followed by solid phase adsorption(s) to remove any unwanted reactivities. Assay by immunoelectrophoresis resulted in a single precipitin arc against anti-Alkaline Phosphatase (calf intestine), anti-Rabbit Serum, Chicken IgG, Chicken IgG F(c) and Chicken Serum. No reaction was observed against Chicken IgG F(ab).

Dilution Range

ELISA: 1:5,000, IHC: 1:200 - 1:1,000, WB: 1:500 - 1:2,500

Expiration Date

12 months from date of receipt.