

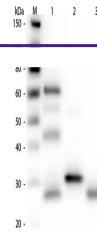
---

## Product Datasheet

### Chicken IgG (H&L) antibody (Alkaline Phosphatase) (orb346916)

**Description**

Chicken IgG (H&amp;L) antibody (Alkaline


 Western Blot  
of  
Unconjugated  
Anti-Chicke...

<b>Species/Host</b>	Rabbit
<b>Reactivity</b>	Gallus
<b>Conjugation</b>	AP
<b>Tested Applications</b>	ELISA, IHC, WB
<b>Immunogen</b>	Chicken IgY / IgG whole molecule
<b>Preservatives</b>	0.1% (w/v) Sodium Azide
<b>Form/Appearance</b>	Liquid (sterile filtered)
<b>Concentration</b>	1.0 mg/mL
<b>Storage</b>	Store Secondary Antibody at 4° C before opening. DO NOT FREEZE. This antibody is stable at 4° C as an undiluted liquid. Dilute only prior to immediate use. Freezing alkaline phosphatase conjugates will result in a substantial loss of enzymatic activity.
<b>Note</b>	For research use only
<b>Application notes</b>	Anti-Chicken IgG Alkaline Phosphatase conjugate has been tested by ELISA and is suitable for immunoblotting (western or dot blot), ELISA, immunoelectron microscopy and immunohistochemistry as well as other antibody-based enzymatic assays requiring lot-to-lot consistency.
<b>Isotype</b>	IgG
<b>Clonality</b>	Polyclonal
<b>Purity</b>	Anti-Chicken IgY / IgG Secondary Antibody was prepared from monospecific antiserum by immunoaffinity chromatography using Chicken IgY / IgG coupled to agarose beads. Assay by immunoelectrophoresis resulted in a single precipitin arc against anti-Rabbit Serum, anti-Alkaline Phosphatase, and Chicken IgY / IgG. Some light chain cross reactivity may be observed against chicken immunoglobulins.
<b>Dilution Range</b>	ELISA: 1:2,000 - 1:10,000, IHC: 1:200 - 1:1,000, WB: 1:500 - 1:2,500
<b>Expiration Date</b>	12 months from date of receipt.