
Product Datasheet

**CHICKEN IgG (H&L) antibody (Peroxidase)
(orb346912)**

Description

CHICKEN IgG (H&L) antibody (Peroxidase)

Species/Host

Rabbit

Reactivity

Gallus

Conjugation

HRP

Tested Applications

DOT, ELISA, IHC, WB

Immunogen

Chicken IgG whole molecule

Preservatives

0.01% (w/v) Gentamicin Sulfate. Do NOT add Sodium Azide!

Form/Appearance

Lyophilized

Concentration

1.0 mg/mL

Storage

Store Secondary Antibody at 4° C prior to restoration. For extended storage aliquot contents and freeze at -20° C or below. Avoid cycles of freezing and thawing. Centrifuge antibody if not completely clear after standing at room temperature. This product is stable for several weeks at 4° C as an undiluted liquid. Dilute only prior to immediate use.

Note

For research use only

Application notes

Anti-Chicken IgG Peroxidase conjugate has been tested by dot blot and ELISA and is suitable for immunoblotting (western or dot blot), ELISA, immunoelectron microscopy and immunohistochemistry as well as other antibody-based enzymatic assays requiring lot-to-lot consistency.

Isotype

IgG

Clonality

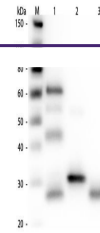
Polyclonal

Purity

Anti-Chicken IgG/IgY Secondary Antibody was prepared from monospecific antiserum by immunoaffinity chromatography using Chicken IgG coupled to agarose beads followed by solid phase adsorption(s) to remove any unwanted reactivities. Assay by immunoelectrophoresis resulted in a single precipitin arc against anti-Peroxidase, anti-Rabbit Serum and Chicken IgG. Some light chain cross reactivity may be observed against chicken immunoglobulins.

Dilution Range

ELISA: 1:50,000 - 1:100,000, IHC: 1:1,000 - 1:5,000, WB: 1:2,500 - 1:15,000



Western Blot of Unconjugated Anti-Chicke...