

---

## Product Datasheet

### Chicken IgG (H&L) antibody (orb346905)

**Description**

Chicken IgG (H&amp;L) antibody

**Species/Host**

Rabbit

**Reactivity**

Gallus

**Conjugation**

Unconjugated

**Tested Applications**

ELISA, IHC, WB

**Immunogen**

Anti-Chicken IgG (H&amp;L) was produced by repeated immunization with Chicken IgG whole molecule in rabbit.

**Preservatives**

0.01% (w/v) Sodium Azide

**Form/Appearance**

Liquid (sterile filtered)

**Concentration**

10 mg/mL

**Storage**

Store vial at 4° C prior to opening. This product is stable at 4° C as an undiluted liquid. Dilute only prior to immediate use. For extended storage, aliquot contents and freeze at -20° C or below. Avoid cycles of freezing and thawing.

**Note**

For research use only

**Application notes**

Anti-Chicken IgG (H&amp;L) has been tested by ELISA, SDS-PAGE, and western blot and is suitable for use in immunoelectrophoresis, western-blot, competitive western-blot, ELISA and competitive ELISA assays. Specific conditions for reactivity and signal detection should be optimized by the end user.

**Isotype**

IgG

**Clonality**

Polyclonal

**Purity**

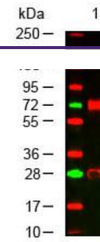
This product was prepared from monospecific antiserum by immunoaffinity chromatography using Chicken IgG coupled to agarose beads. Assay by immunoelectrophoresis resulted in a single precipitin arc against anti-Rabbit Serum and Chicken IgG. Some light chain cross reactivity may be observed against chicken immunoglobulins.

**Dilution Range**

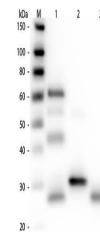
ELISA: 1:200,000 - 1:400,000, IHC: 1:1,000 - 1:5,000, WB: 1:10,000 - 1:30,000

**Expiration Date**

12 months from date of receipt.



Western Blot of Rabbit anti-Chicken IgG ...



Western Blot of Unconjugated Anti-Chicke...