

---

## Product Datasheet

### Chicken IgG (H&L) antibody (Alkaline Phosphatase) (orb346895)

**Description**

Chicken IgG (H&amp;L) antibody (Alkaline Phosphatase)

**Species/Host**

Goat

**Reactivity**

Gallus

**Conjugation**

AP

**Tested**

DOT, ELISA, IHC, WB

**Applications**
**Immunogen**

Anti-Chicken IgG whole molecule was produced by repeated immunization with Chicken IgG whole molecule in goat.

**Preservatives**

0.01% (w/v) Sodium Azide

**Form/Appearance**

Liquid (sterile filtered)

**Concentration**

1.0 mg/mL

**Storage**

Store vial at 4° C before opening. DO NOT FREEZE. This product is stable at 4° C as an undiluted liquid. Dilute only prior to immediate use. Freezing alkaline phosphatase conjugates will result in a substantial loss of enzymatic activity.

**Note**

For research use only

**Application notes**

Anti-Chicken IgG Alkaline Phosphatase Conjugate has been tested by ELISA, dot blot, and western blot. This product is suitable for use in immunoelectrophoresis, western-blot, competitive western-blot, ELISA and competitive ELISA assays. Specific conditions for reactivity and signal detection should be optimized by the end user.

**Isotype**

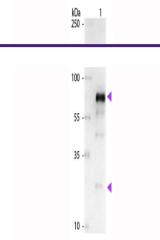
IgG

**Clonality**

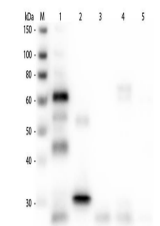
Polyclonal

**Purity**

This product was prepared from monospecific antiserum by immunoaffinity chromatography using Chicken IgG coupled to agarose beads followed by conjugation to fluorochrome and extensive dialysis against the buffer stated above. Assay by immunoelectrophoresis resulted in a single precipitin arc against anti-Goat Serum, anti-Alkaline Phosphatase, Chicken IgG and Chicken Serum. No reaction was observed against Bovine, Goat, Guinea Pig, Hamster, Horse, Human, Mouse, Rabbit, Rat and Sheep Serum Proteins. This antibody will react with heavy chains of Chicken IgG and with light chains of most Chicken immunoglobulins.



Western Blot of Alkaline Phosphatase Con...



Western Blot of Unconjugated Anti-Chicke...