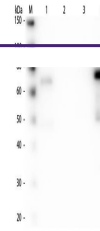

Product Datasheet

Chicken IgM (mu chain) antibody (Alkaline Phosphatase) (orb346894)

Description

Chicken IgM (mu chain) antibody (Alkaline



Species/Host

Reactivity

Conjugation

Tested Applications

Immunogen

Preservatives

Form/Appearance

Concentration

Storage

Note

Application notes

Isotype

Clonality

Purity

Dilution Range

Expiration Date

Goat

Gallus

AP

ELISA, IHC, WB

Chicken IgM whole molecule

0.01% (w/v) Sodium Azide

Liquid (sterile filtered)

1.0 mg/mL

Store vial at 4° C before opening. DO NOT FREEZE. This product is stable at 4° C as an undiluted liquid. Dilute only prior to immediate use. Freezing alkaline phosphatase conjugates will result in a substantial loss of enzymatic activity.

For research use only

Anti-Chicken IgM Alkaline Phosphatase conjugate has been tested by ELISA and is suitable for immunoblotting (western or dot blot), ELISA, immunoelectron microscopy and immunohistochemistry as well as other antibody-based enzymatic assays requiring lot-to-lot consistency.

IgG

Polyclonal

This product was prepared from monospecific antiserum by immunoaffinity chromatography using Chicken IgM coupled to agarose beads followed by solid phase adsorption(s) to remove any unwanted reactivities. Assay by immunoelectrophoresis resulted in a single precipitin arc against anti-Alkaline Phosphatase, anti-Goat Serum, Chicken IgM and Chicken Serum. No reaction was observed against other chicken heavy or light chain proteins.

ELISA: 1:8,000, IHC: 1:200 - 1:1,000, WB: 1:200 - 1:2,000

12 months from date of receipt.

Western Blot of Anti-Chicken IgM (mu cha...