
Product Datasheet

Bovine IgG F(ab')₂ antibody (Alkaline Phosphatase) (orb346832)

Description

 Bovine IgG F(ab')₂ antibody (Alkaline)

Species/Host

Rabbit

Reactivity

Bovine

Conjugation

AP

Tested Applications

DOT, ELISA, IHC, WB

Immunogen

 Bovine IgG F(ab')₂ fragment

Preservatives

0.01% (w/v) Sodium Azide

Form/Appearance

Liquid (sterile filtered)

Concentration

0.6 mg/mL

Storage

Store vial at 4° C before opening. DO NOT FREEZE. This product is stable at 4° C as an undiluted liquid. Dilute only prior to immediate use. Freezing alkaline phosphatase conjugates will result in a substantial loss of enzymatic activity.

Note

For research use only

Application notes

Anti-Bovine IgG F(ab')₂ Alkaline Phosphatase Conjugate has been tested by ELISA and dot blot. This product has been assayed against 1.0 ug of Bovine IgG in a standard capture ELISA using pNPP p-nitrophenyl phosphate code # NPP-10 as a substrate for 30 minutes at room temperature. A working dilution of 1:1,600 to 1:11,000 of the reconstitution concentration is suggested for this product.

Isotype

IgG

Clonality

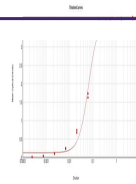
Polyclonal

Purity

This product was prepared from monospecific antiserum by immunoaffinity chromatography using Bovine IgG coupled to agarose beads followed by solid phase adsorption(s) to remove any unwanted reactivities. Assay by immunoelectrophoresis resulted in a single precipitin arc against anti-Alkaline Phosphatase (calf intestine), anti-Rabbit Serum, Bovine IgG, Bovine IgG F(ab')₂ and Bovine Serum. No reaction was observed against Bovine IgG F(c).

Dilution Range

ELISA: 1:10,000 - 1:20,000, IHC: 1:200 - 1:1,000, WB: 1:500 - 1:2,500



ELISA
Results of
Purified
Rabbit Anti-
Bo...