

---

## Product Datasheet

### Bovine IgG F(ab')<sub>2</sub> antibody (FITC) (orb346811)

**Description**

 Bovine IgG F(ab')<sub>2</sub> antibody (FITC)

**Species/Host**

Goat

**Reactivity**

Bovine

**Conjugation**

FITC

**Tested**

DOT, FC, FLISA, IF

**Applications**
**Immunogen**

 Bovine IgG F(ab')<sub>2</sub> fragment

**Preservatives**

0.01% (w/v) Sodium Azide

**Form/Appearance**

Lyophilized

**Concentration**

2.0 mg/mL

**Storage**

Store vial at 4° C prior to restoration. For extended storage aliquot contents and freeze at -20° C or below. Avoid cycles of freezing and thawing. Centrifuge product if not completely clear after standing at room temperature. This product is stable for several weeks at 4° C as an undiluted liquid. Dilute only prior to immediate use.

**Note**

For research use only

**Application notes**

Anti-Bovine IgG F(ab')<sub>2</sub> Fluorescein Conjugated has been tested by dot blot and is designed for immunofluorescence microscopy, fluorescence based plate assays (FLISA) and fluorescent western blotting. This product is also suitable for multiplex analysis, including multicolor imaging, utilizing various commercial platforms.

**Isotype**

IgG

**Clonality**

Polyclonal

**Purity**

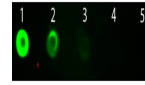
This product was prepared from monospecific antiserum by immunoaffinity chromatography using Bovine IgG coupled to agarose beads followed by solid phase adsorption(s) to remove any unwanted reactivities. Assay by immunoelectrophoresis resulted in a single precipitin arc against anti-Fluorescein, anti-Goat Serum, Bovine IgG, Bovine IgG F(ab')<sub>2</sub> and Bovine Serum. No reaction was observed against Bovine IgG F(c).

**Dilution Range**

FLISA: 1:10,000 - 1:50,000, FC: 1:500 - 1:2,500, IF: 1:1,000 - 1:5,000

**Expiration Date**

12 months from date of receipt.



Dot Blot of  
Goat anti-  
Bovine IgG  
Fab2 An...