
Product Datasheet

F(ab')₂ Swine IgG (H&L) antibody (orb346806)

Description

 F(ab')₂ Swine IgG (H&L) antibody

Species/Host

Rabbit

Reactivity

Porcine

Conjugation

Unconjugated

Tested

ELISA, IHC, WB

Applications
Immunogen

Swine IgG whole molecule

Preservatives

None

Form/Appearance

Lyophilized

Concentration

10.0 mg/mL

Storage

Store vial at 4° C prior to restoration. For extended storage aliquot contents and freeze at -20° C or below. Avoid cycles of freezing and thawing. Centrifuge product if not completely clear after standing at room temperature. This product is stable for several weeks at 4° C as an undiluted liquid. Dilute only prior to immediate use.

Note

For research use only

Application notes

F(ab')₂ Anti-Swine IgG Antibody has been tested by Western Blot and is suitable for immunomicroscopy and flow cytometry or FACS analysis as well as other antibody based fluorescent assays requiring extremely low background levels, absence of F(c) mediated binding, lot-to-lot consistency, high titer and specificity. The maximum amount of reagent required to stain 1 x 10E6 cells in flow cytometry is approximately 1.0 µg of antibody. Lesser amounts of reagent may be sufficient for staining. Optimal titers for other applications should be determined by the researcher. As a general guideline dilutions of 1:100 to 1:250 should be suitable for most applications.

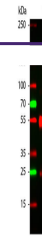
Isotype

 IgG F(ab')₂
Clonality

Polyclonal

Purity

This product is a F(ab')₂ fragment of IgG fraction antibody purified from monospecific antiserum by a multi-step process which includes delipidation, salt fractionation, ion exchange chromatography and pepsin digestion followed by chromatographic separation and extensive dialysis against the buffer stated above. Assay by immunoelectrophoresis resulted in a single precipitin arc against anti-Rabbit Serum, Swine IgG and Swine Serum. No reaction was



Western Blot of Rabbit anti-Swine antibo...