
Product Datasheet

Rabbit IgG (H&L) antibody (orb346681)

Description

Rabbit IgG (H&L) antibody

Species/Host

Goat

Reactivity

Rabbit

Conjugation

Unconjugated

Tested

ELISA, IHC, WB

Applications
Immunogen

Anti-Rabbit IgG whole molecule was produced by repeated immunization with Rabbit IgG whole molecule in goat.

Preservatives

0.01% (w/v) Sodium Azide

Form/Appearance

Lyophilized

Concentration

10.0 mg/mL

Storage

Store vial at 4° C prior to restoration. For extended storage aliquot contents and freeze at -20° C or below. Avoid cycles of freezing and thawing. Centrifuge product if not completely clear after standing at room temperature. This product is stable for several weeks at 4° C as an undiluted liquid. Dilute only prior to immediate use.

Note

For research use only

Application notes

Anti-Rabbit IgG whole molecule has been tested by ELISA and is suitable for use in immunoelectrophoresis, western-blot, competitive western-blot, ELISA and competitive ELISA assays. Specific conditions for reactivity and signal detection should be optimized by the end user.

Isotype

IgG

Clonality

Polyclonal

Purity

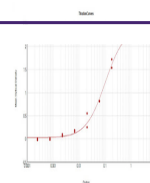
This product is an IgG fraction antibody purified from monospecific antiserum by a multi-step process which includes delipidation, salt fractionation and ion exchange chromatography followed by extensive dialysis against the buffer stated above. Assay by immunoelectrophoresis resulted in a single precipitin arc against anti-Goat Serum, Rabbit IgG and Rabbit Serum.

Dilution Range

ELISA: 1:50,000, IHC: 1:1,000 - 1:5,000, WB: 1:5,000 - 1:25,000

Expiration Date

12 months from date of receipt.



ELISA
Results of
Goat Anti-
Rabbit IgG
An...