

Product Datasheet

Dog IgM mu chain antibody (Peroxidase) (orb346588)

Description

Dog IgM mu chain antibody (Peroxidase)

Species/Host

Rabbit

Reactivity

Canine

Conjugation

HRP

Tested

DOT, ELISA, IHC, WB

Applications
Immunogen

Dog IgM mu heavy chain

Preservatives

0.01% (w/v) Gentamicin Sulfate. Do NOT add Sodium Azide!

Form/Appearance

Lyophilized

Concentration

10.0 mg/mL

Storage

Store vial at 4° C prior to restoration. For extended storage aliquot contents and freeze at -20° C or below. Avoid cycles of freezing and thawing. Centrifuge product if not completely clear after standing at room temperature. This product is stable for several weeks at 4° C as an undiluted liquid. Dilute only prior to immediate use.

Note

For research use only

Application notes

Anti-Dog IgM mu chain Peroxidase Conjugated has been tested dot blot and ELISA. This product is assayed against 1.0 ug of Dog IgM in a standard capture ELISA using ABTS (2,2'-azino-bis-[3-ethylbenthiazoline-6-sulfonic acid]) code # ABTS-100 as a substrate for 30 minutes at room temperature. A working dilution of 1:4,000 to 1:20,000 of the reconstitution concentration is suggested for this product.

Isotype

IgG

Clonality

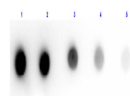
Polyclonal

Purity

Dog IgM mu chain Antibody Peroxidase Conjugated is an IgG fraction antibody purified from monospecific antiserum by a multi-step process which includes delipidation, salt fractionation and ion exchange chromatography followed by extensive dialysis against the buffer stated above. Assay by immunoelectrophoresis resulted in a single precipitin arc against anti-Peroxidase, anti-Rabbit Serum, Dog IgM and Dog Serum. No reaction was observed against Dog IgG.

Dilution Range

ELISA: 1:10,000 - 1:50,000, IHC: 1:500 - 1:2,500,



Dot Blot
results of
Rabbit Anti-
Dog IgM ...