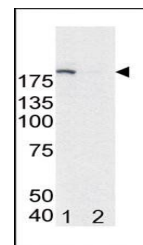
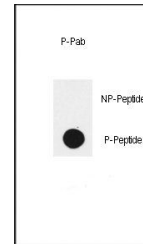


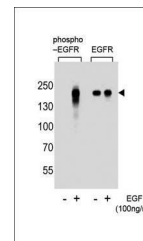
Product Datasheet

EGFR (phospho-Tyr1172) antibody (orb34650)

Description	Peptide affinity purified rabbit polyclonal antibody.
Species/Host	Rabbit
Reactivity	Human
Conjugation	Unconjugated
Tested Applications	DOT, WB
Immunogen	Synthetic Peptide
Target	EGFR
Form/Appearance	Purified polyclonal antibody supplied in PBS with 0.09% (W/V) sodium azide. This antibody is purified through a protein A column, followed by peptide affinity purification.
Storage	Maintain refrigerated at 2-8°C for up to 2 weeks. For long term storage store at -20°C in small aliquots to prevent freeze-thaw cycles
Note	For research use only
Isotype	Rabbit IgG
Clonality	Polyclonal
MW	134277
Uniprot ID	P00533
NCBI	NP_958441.1 , NP_958440.1 , NP_958439.1 , NP_005219.2
Dilution Range	WB: 1:1000, DOT: 1:500
Expiration Date	12 months from date of receipt.



Western blot analysis of in Hela cell ly...



Western blot analysis of A431 cells using...