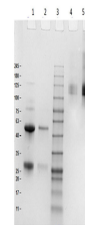


Product Datasheet

Sheep IgG Antibody (orb346367)

Description	Sheep IgG Antibody
Conjugation	Unconjugated
Tested Applications	ELISA, IHC, SDS-PAGE, WB
Preservatives	0.01% (w/v) Sodium Azide. 0.02 M Potassium Phosphate, 0.15 M Sodium Chloride, pH 7.2
Form/Appearance	Lyophilized
Concentration	10.0 mg/mL
Storage	Store vial at 4° C prior to restoration. For extended storage aliquot contents and freeze at -20° C or below. Avoid cycles of freezing and thawing. Centrifuge product if not completely clear after standing at room temperature. Sheep IgG whole molecule is stable for several weeks at 4° C as an undiluted liquid. Dilute only prior to immediate use.
Note	For research use only
Application notes	Sheep IgG whole molecule has been tested by SDS-Page and can be utilized as a control or standard reagent in Western Blotting and ELISA experiments.
Isotype	IgG
Purity	Sheep IgG whole molecule was prepared from normal serum by a multi-step process which includes delipidation, salt fractionation and ion exchange chromatography followed by extensive dialysis against the buffer stated above. Sheep IgG whole molecule was assayed by immunoelectrophoresis resulted in a single precipitin arc against anti-Sheep IgG and anti-Sheep Serum.
Source	Sheep
Dilution Range	ELISA: User Optimized, IHC: User Optimized, WB: User Optimized
Expiration Date	12 months from date of receipt.



SDS PAGE
Results of
Sheep IgG
Whole Mole...



SDS-Page of
Sheep IgG
Lane 1:
Sheep IgG ...