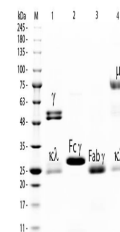


## Product Datasheet

# Rat IgG F(ab')<sub>2</sub> Fluorescein Antibody (orb346344)

<b>Description</b>	Rat IgG F(ab') <sub>2</sub> Fluorescein Antibody
<b>Conjugation</b>	FITC
<b>Preservatives</b>	0.01% (w/v) Thimerosal
<b>Form/Appearance</b>	Lyophilized
<b>Concentration</b>	1.0 mg/mL
<b>Storage</b>	Store vial at 4° C prior to restoration. For extended storage aliquot contents and freeze at -20° C or below. Avoid cycles of freezing and thawing. Centrifuge product if not completely clear after standing at room temperature. This product is stable for several weeks at 4° C as an undiluted liquid. Dilute only prior to immediate use.
<b>Note</b>	For research use only
<b>Application notes</b>	RAT IgG F(ab') <sub>2</sub> fragment Fluorescein conjugated is designed for immunofluorescence microscopy, fluorescence based plate assays (FLISA) and fluorescent western blotting. This product is also suitable for multiplex analysis, including multicolor imaging, utilizing various commercial platforms.
<b>Isotype</b>	IgG F(ab') <sub>2</sub>
<b>Purity</b>	This product was prepared from normal serum by delipidation, salt fractionation and ion change chromatography followed by pepsin digestion and extensive dialysis against the buffer stated above. Assay by immunoelectrophoresis resulted in a single precipitin arc against anti-Fluorescein, anti-Rat IgG, anti-Rat IgG F(ab') <sub>2</sub> and anti-Rat Serum. No reaction was observed against anti-Rat IgG F(c) or anti-Pepsin.
<b>Source</b>	Rat
<b>Expiration Date</b>	12 months from date of receipt.



SDS-PAGE of  
Rat IgG F(c)  
Fragment  
Rhodam...