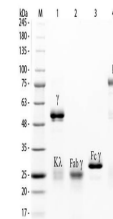


Product Datasheet

Rabbit IgG Fab Biotin Antibody (orb346326)

| | |
|--------------------------|---|
| Description | Rabbit IgG Fab Biotin Antibody |
| Conjugation | Biotin |
| Preservatives | 0.01% (w/v) Sodium Azide |
| Form/Appearance | Lyophilized |
| Concentration | 1.0 mg/mL |
| Storage | Store vial at 4° C prior to restoration. For extended storage aliquot contents and freeze at -20° C or below. Avoid cycles of freezing and thawing. Centrifuge product if not completely clear after standing at room temperature. This product is stable for several weeks at 4° C as an undiluted liquid. Dilute only prior to immediate use. |
| Note | For research use only |
| Application notes | Rabbit IgG Fab fragment Biotin conjugated can be used as a control for ELISA and western blotting. |
| Isotype | IgG Fab |
| Purity | This product was prepared from normal serum by delipidation, salt fractionation, ion exchange chromatography followed by papain digestion and extensive dialysis against the buffer stated above. Assay by immunoelectrophoresis resulted in a single precipitin arc against anti-biotin, anti-Rabbit IgG, anti-Rabbit IgG F(ab') ₂ and anti-Rabbit Serum. No reaction was observed against anti-Rabbit IgG F(c) or anti-Papain. |
| Source | Rabbit |
| Expiration Date | 12 months from date of receipt. |



SDS-PAGE of Rabbit IgG Whole Molecule Rh...