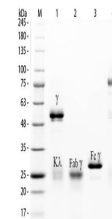


## Product Datasheet

### Rabbit IgG F(c) Biotin Antibody (orb346324)

<b>Description</b>	Rabbit IgG F(c) Biotin Antibody
<b>Conjugation</b>	Biotin
<b>Preservatives</b>	0.01% (w/v) Sodium Azide
<b>Form/Appearance</b>	Lyophilized
<b>Concentration</b>	1.0 mg/mL
<b>Storage</b>	Store vial at 4° C prior to restoration. For extended storage aliquot contents and freeze at -20° C or below. Avoid cycles of freezing and thawing. Centrifuge product if not completely clear after standing at room temperature. This product is stable for several weeks at 4° C as an undiluted liquid. Dilute only prior to immediate use.
<b>Note</b>	For research use only
<b>Application notes</b>	Rabbit IgG F(c) fragment can be utilized as a control or standard reagent in Western Blotting and ELISA experiments. Specific conditions should be optimized by user.
<b>Isotype</b>	IgG F(c)
<b>Purity</b>	RABBIT IgG F(c) fragment was prepared from normal serum delipidation, salt fractionation, ion exchange chromatography followed by papain digestion and extensive dialysis against the buffer stated above. Assay by immunoelectrophoresis resulted in a single precipitin arc against anti-biotin, anti-Rabbit IgG, anti-Rabbit IgG F(c) and anti-Rabbit Serum. No reaction was observed against anti-Rabbit IgG F(ab') <sub>2</sub> or anti-Papain.
<b>Source</b>	Rabbit
<b>Expiration Date</b>	12 months from date of receipt.



SDS-PAGE of  
Rabbit IgG  
Whole  
Molecule  
Rh...