

Product Datasheet

Rabbit IgG Fab Antibody (orb346312)

Description

Rabbit IgG Fab Antibody

Conjugation

Unconjugated

Tested

Applications

ELISA, IHC, SDS-PAGE, WB

Preservatives

0.01% (w/v) Sodium Azide. 0.02 M Potassium Phosphate, 0.15 M Sodium Chloride, pH 7.2

Form/Appearance

Liquid (sterile filtered)

Concentration

2.0 mg/mL

Storage

Store vial at 4° C prior to opening. This product is stable 4° C as an undiluted liquid. Dilute only prior to immediate use. For extended storage mix with an equal volume of glycerol, aliquot contents and freeze at -20° C or below. Avoid cycles of freezing and thawing.

Note

For research use only

Application notes

Rabbit IgG Fab Fragment has been tested in SDS-Page and can be utilized as a control or standard reagent in Western Blotting and ELISA experiments.

Isotype

IgG Fab

Purity

Rabbit IgG Fab fragment was prepared from normal serum by a multi-step process which includes delipidation, salt fractionation, ion exchange chromatography and papain digestion followed by chromatographic separation and extensive dialysis against the buffer stated above. Rabbit IgG Fab fragment was assayed by immunoelectrophoresis resulted in a single precipitin arc against anti-Rabbit Serum, anti-Rabbit IgG and anti-Rabbit IgG F(ab')₂. No reaction was observed against anti-Rabbit IgG F(c) or anti-Papain.

Source

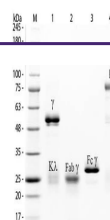
Rabbit

Dilution Range

ELISA: User Optimized, IHC: User Optimized, WB: User Optimized

Expiration Date

12 months from date of receipt.



SDS-PAGE of
Rabbit IgG
Whole
Molecule
Rh...