

Product Datasheet

Rabbit IgG F(c) fragment Antibody (orb346310)

Description	Rabbit IgG F(c) fragment Antibody
Conjugation	Unconjugated
Tested Applications	SDS-PAGE
Preservatives	0.01% (w/v) Sodium Azide
Form/Appearance	Liquid (sterile filtered)
Concentration	1.0 mg/mL
Storage	Store vial at 4° C prior to opening. For extended storage aliquot contents and freeze at -20° C or below. Avoid cycles of freezing and thawing. Centrifuge product if not completely clear after standing at room temperature. Rabbit IgG F(c) fragment is stable for several weeks at 4° C as an undiluted liquid. Dilute only prior to immediate use.
Note	For research use only
Application notes	Rabbit IgG F(c) Fragment has been tested in SDS-Page and can be utilized as a control or standard reagent in Western Blotting and ELISA experiments.
Isotype	IgG F(c)
Purity	Rabbit IgG F(c) fragment was prepared from normal serum by a multi-step process which includes delipidation, salt fractionation, ion exchange chromatography and papain digestion followed by chromatographic separation and extensive dialysis against the buffer stated above. Rabbit IgG F(c) fragment assayed by immunoelectrophoresis resulted in a single precipitin arc against anti-Rabbit Serum, anti-Rabbit IgG and anti-Rabbit IgG F(c). No reaction was observed against anti-Rabbit IgG F(ab') ₂ or anti-Papain.
Source	Rabbit
Dilution Range	ELISA: User Optimized, IHC: User Optimized, WB: User Optimized

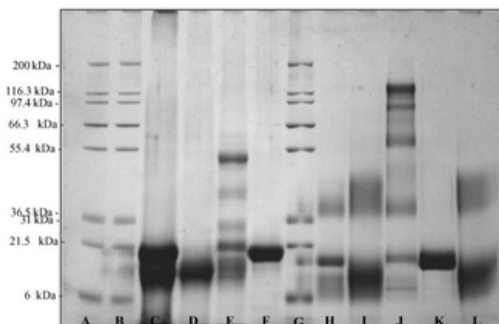
Biorbyt Ltd.

7 Signet Court, Swann's Road,
Cambridge, CB5 8LA, United Kingdom
Email: info@biorbyt.com, support@biorbyt.com
Phone: [+44 \(0\) 1223 859-353](tel:+44(0)1223859353) | Fax: [+1 \(415\) 651-8558](tel:+1(415)6518558)

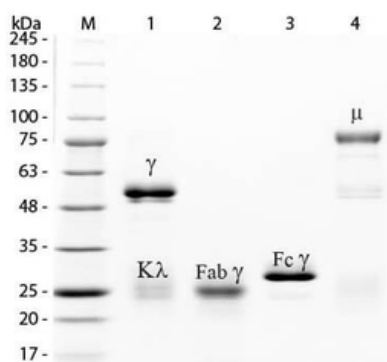
Biorbyt LLC.

68 TW Alexander Drive,
Durham, NC, 27713, United States
Email: info@biorbyt.com, support@biorbyt.com
Phone: [+1 \(415\) 906-5211](tel:+1(415)9065211) | Fax: [+1 \(415\) 651-8558](tel:+1(415)6518558)

Expiration Date 12 months from date of receipt.



SDS PAGE gel of commercially-purified rabbit Immunoglobulin G (rIgG) and of rIgG papain digestion products Fab and Fc. Lanes C-F contain products which have been reduced with b-mercaptoethanol. Lanes H-L contain non-reduced products. Each lane contains approximately 35 mg of the following products: Lanes C and H contain papain digested products; Lanes D, I and L contain Fc fragment obtained from protein A purification; Lanes E and J contain whole rIgG; Lanes F and K contain Fab fragment obtained from protein A purification; Lanes A, B and G contain gel markers. Whole rIgG (p/n orb2652747), rFc (p/n orb346310), rFab (p/n orb2652745), rF(ab')₂ (p/n orb346311).



SDS-PAGE of Rabbit IgG Whole Molecule Rhodamine Conjugated (p/n orb346302). Lane M: 3 µl Opal Prestained Marker. Lane 1: Reduced Rabbit IgG Whole Molecule Rhodamine Conjugated (p/n orb346302). Lane 2: Reduced Rabbit IgG F(ab) Fragment (p/n orb2652745). Lane 3: Reduced Rabbit IgG F(c) Fragment (p/n orb346310). Lane 4: Reduced Rabbit IgM Whole Molecule (p/n orb346313). Load: 1 µg for F(ab) and F(c); 1.2 µg for IgG and IgM. Predicted/Observed size: IgG at 50 and 25 kDa; F(c) at 25 kDa; F(ab) at 25 kDa; IgM at 70 and 23 kDa. Observed F(c) Fragment migrates slightly higher.

Biorbyt Ltd.

7 Signet Court, Swann's Road,
Cambridge, CB5 8LA, United Kingdom
Email: info@biorbyt.com, support@biorbyt.com
Phone: [+44 \(0\) 1223 859-353](tel:+44(0)1223859353) | Fax: [+1 \(415\) 651-8558](tel:+1(415)6518558)

Biorbyt LLC.

68 TW Alexander Drive,
Durham, NC, 27713, United States
Email: info@biorbyt.com, support@biorbyt.com
Phone: [+1 \(415\) 906-5211](tel:+1(415)9065211) | Fax: [+1 \(415\) 651-8558](tel:+1(415)6518558)