

---

## Product Datasheet

### Mouse IgG F(ab')<sub>2</sub> Antibody (orb346281)

**Description**

 Mouse IgG F(ab')<sub>2</sub> Antibody

**Conjugation**

Unconjugated

**Tested Applications**

ELISA, IHC, SDS-PAGE, WB

**Preservatives**

0.01% (w/v) Sodium Azide. 0.02 M Potassium Phosphate, 0.15 M Sodium Chloride, pH 7.2

**Form/Appearance**

Lyophilized

**Concentration**

2.0 mg/mL

**Storage**

Store vial at 4° C prior to restoration. For extended storage aliquot contents and freeze at -20° C or below. Avoid cycles of freezing and thawing. Centrifuge product if not completely clear after standing at room temperature. Mouse IgG F(ab')<sub>2</sub> fragment is stable for several weeks at 4° C as an undiluted liquid. Dilute only prior to immediate use.

**Note**

For research use only

**Application notes**

Mouse IgG F(ab')<sub>2</sub> fragment has been tested by SDS-Page and can be utilized as a control or standard reagent in Western Blotting and ELISA experiments.

**Isotype**

 IgG F(ab')<sub>2</sub>
**Purity**

Mouse IgG F(ab')<sub>2</sub> fragment was prepared from normal serum by a multi-step process which includes delipidation, salt fractionation, ion exchange chromatography and pepsin digestion followed by chromatographic separation and extensive dialysis against the buffer stated above. Assay by immunoelectrophoresis resulted in a single precipitin arc against anti-Mouse Serum, anti-Mouse IgG and anti-Mouse IgG F(ab')<sub>2</sub>. No reaction was observed against anti-Mouse IgG F(c) or anti-Pepsin.

**Source**

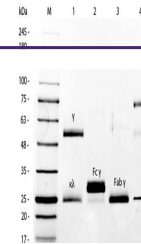
Mouse

**Dilution Range**

ELISA: User Optimized, IHC: User Optimized, WB: User Optimized

**Expiration Date**

12 months from date of receipt.



SDS-PAGE of Mouse IgG Whole Molecule Rho...