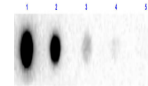


Product Datasheet

Human IgG F(ab')₂ Biotin Antibody (orb346254)

Description	Human IgG F(ab') ₂ Biotin Antibody
Conjugation	Biotin
Tested Applications	DOT, ELISA
Preservatives	0.01% (w/v) Sodium Azide
Form/Appearance	Lyophilized
Concentration	1.0 mg/mL
Storage	Store vial at 4° C prior to restoration. For extended storage aliquot contents and freeze at -20° C or below. Avoid cycles of freezing and thawing. Centrifuge product if not completely clear after standing at room temperature. This product is stable for several weeks at 4° C as an undiluted liquid. Dilute only prior to immediate use.
Note	For research use only
Application notes	Human IgG F(ab') ₂ fragment Biotin antibody has been tested in dot blot and ELISA and are ideal for ELISA, western blotting, Immunohistochemistry, Fluorescence Microscopy, Flow Cytometry as well as other antibody detection methods.
Isotype	IgG F(ab') ₂
Purity	This product was prepared from normal serum by delipidation, salt fractionation, ion exchange chromatography followed by pepsin digestion and extensive dialysis against the buffer stated above. Assay by immunoelectrophoresis resulted in a single precipitin arc against anti-biotin, anti-Human IgG, anti-Human IgG F(ab') ₂ and anti-Human Serum. No reaction was observed against anti-Human IgG F(c) or anti-Pepsin.
Source	Human
Expiration Date	12 months from date of receipt.



Dot Blot results of Human IgG F(ab')₂ Fr...